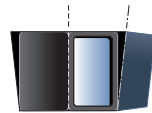
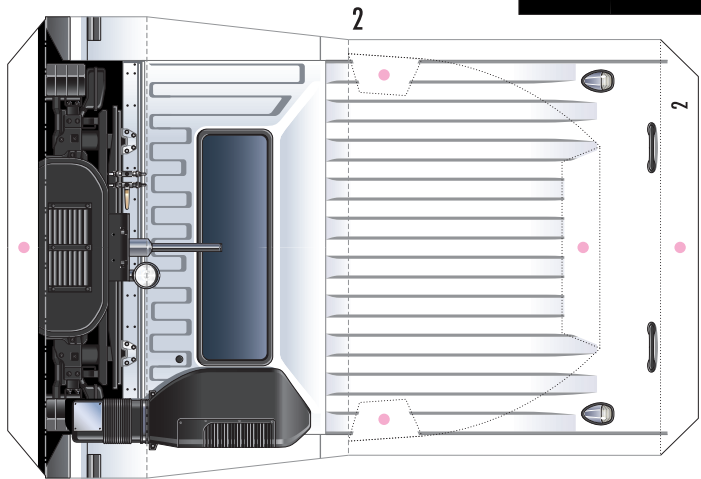
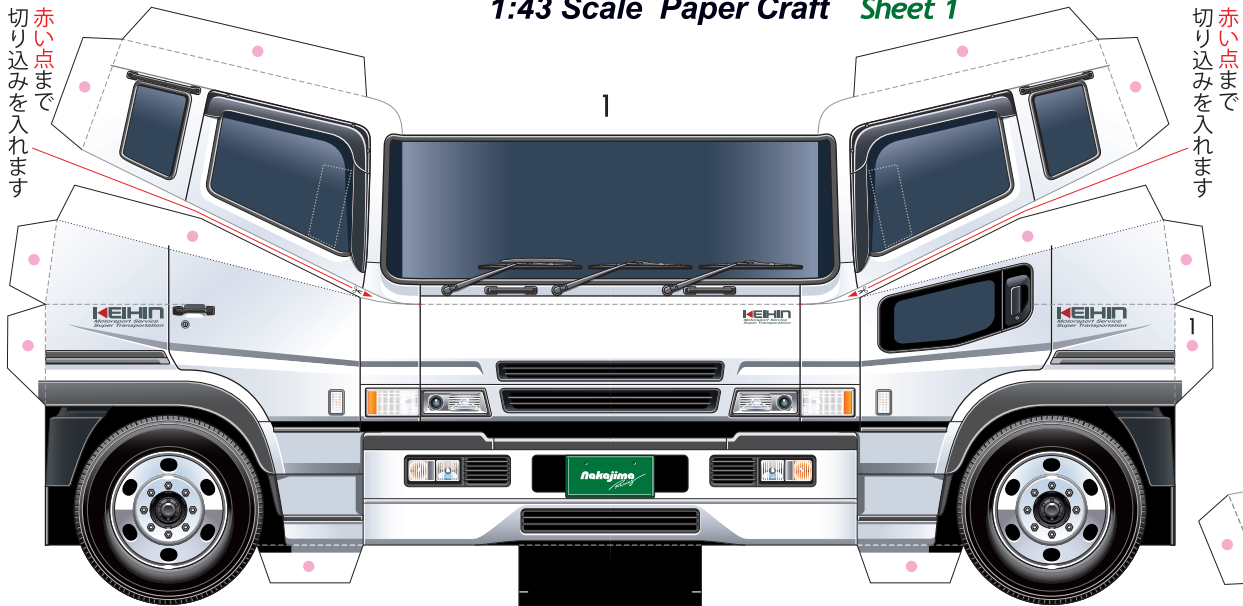
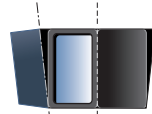


# Epson Nakajima Racing Transportor

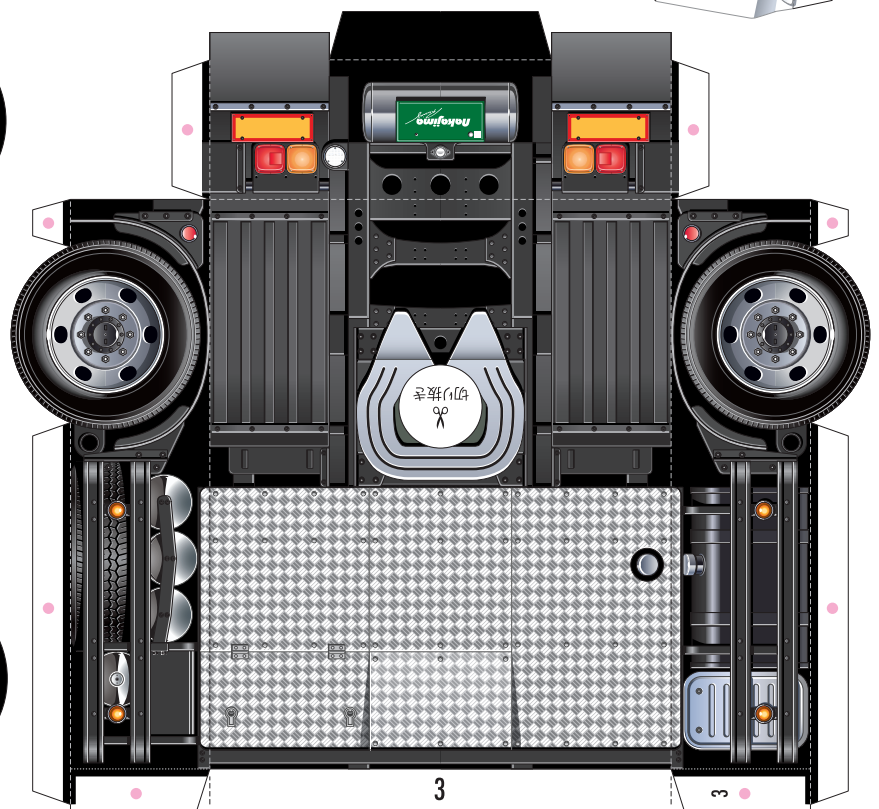
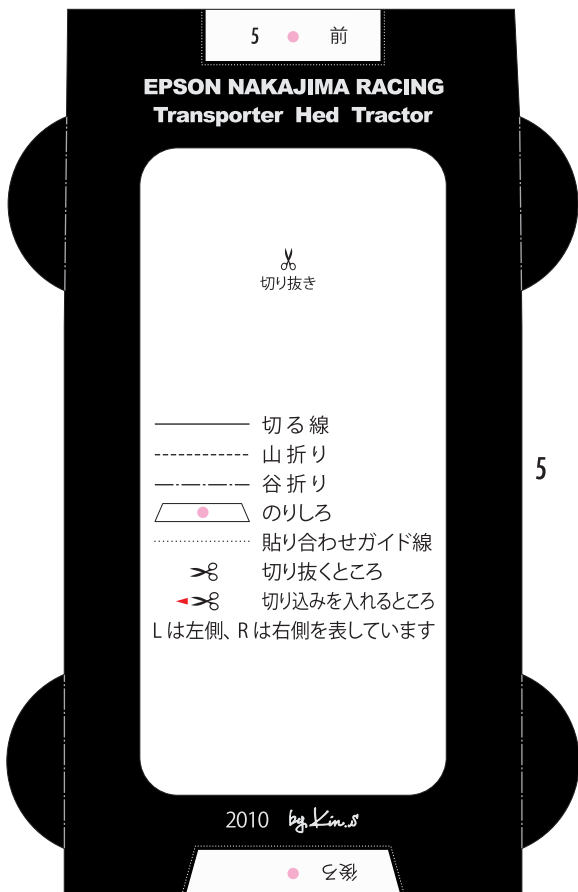
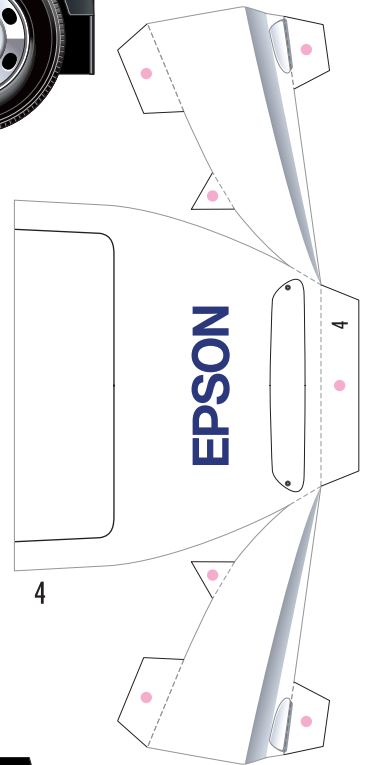
1:43 Scale Paper Craft Sheet 1



6L

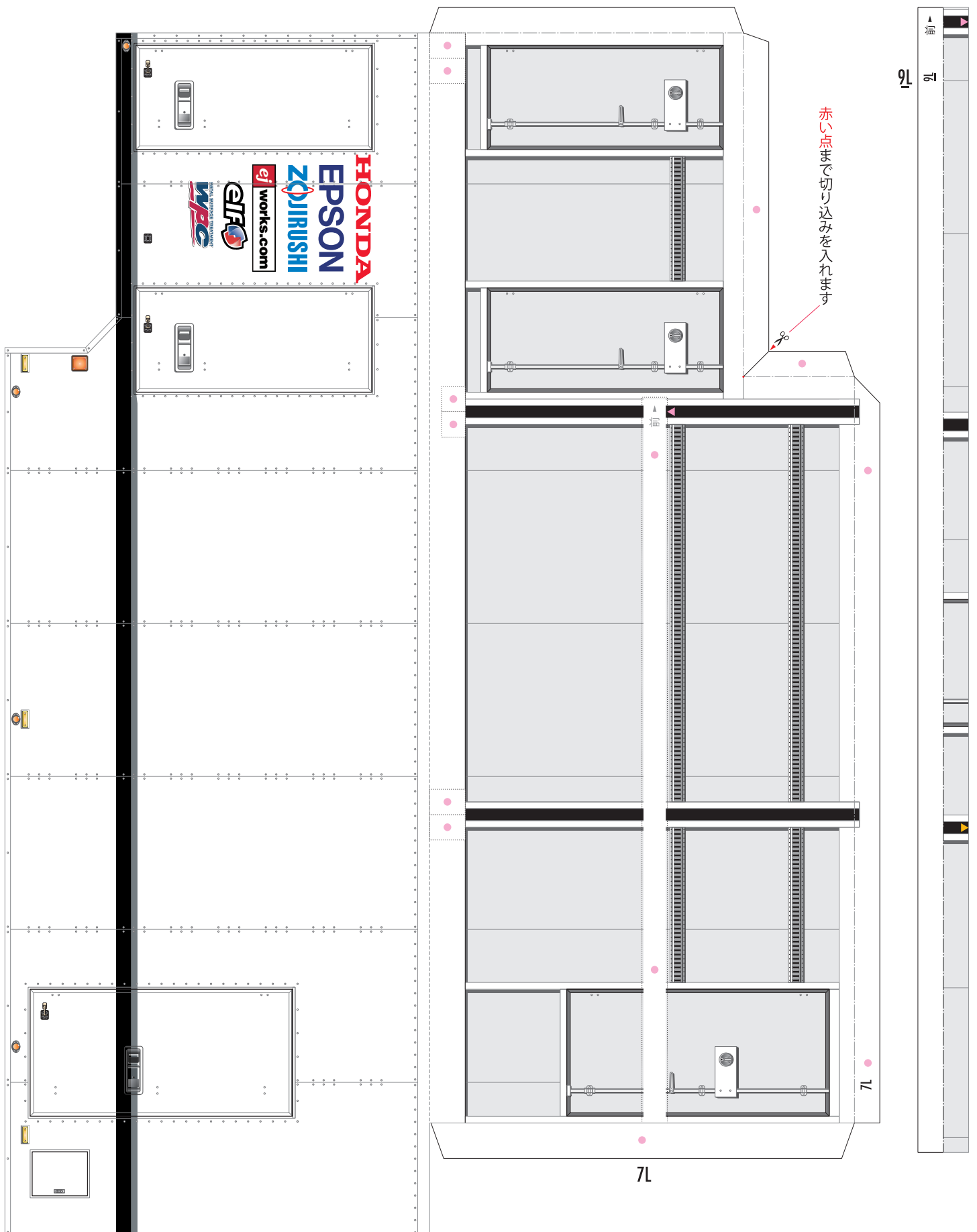


6R



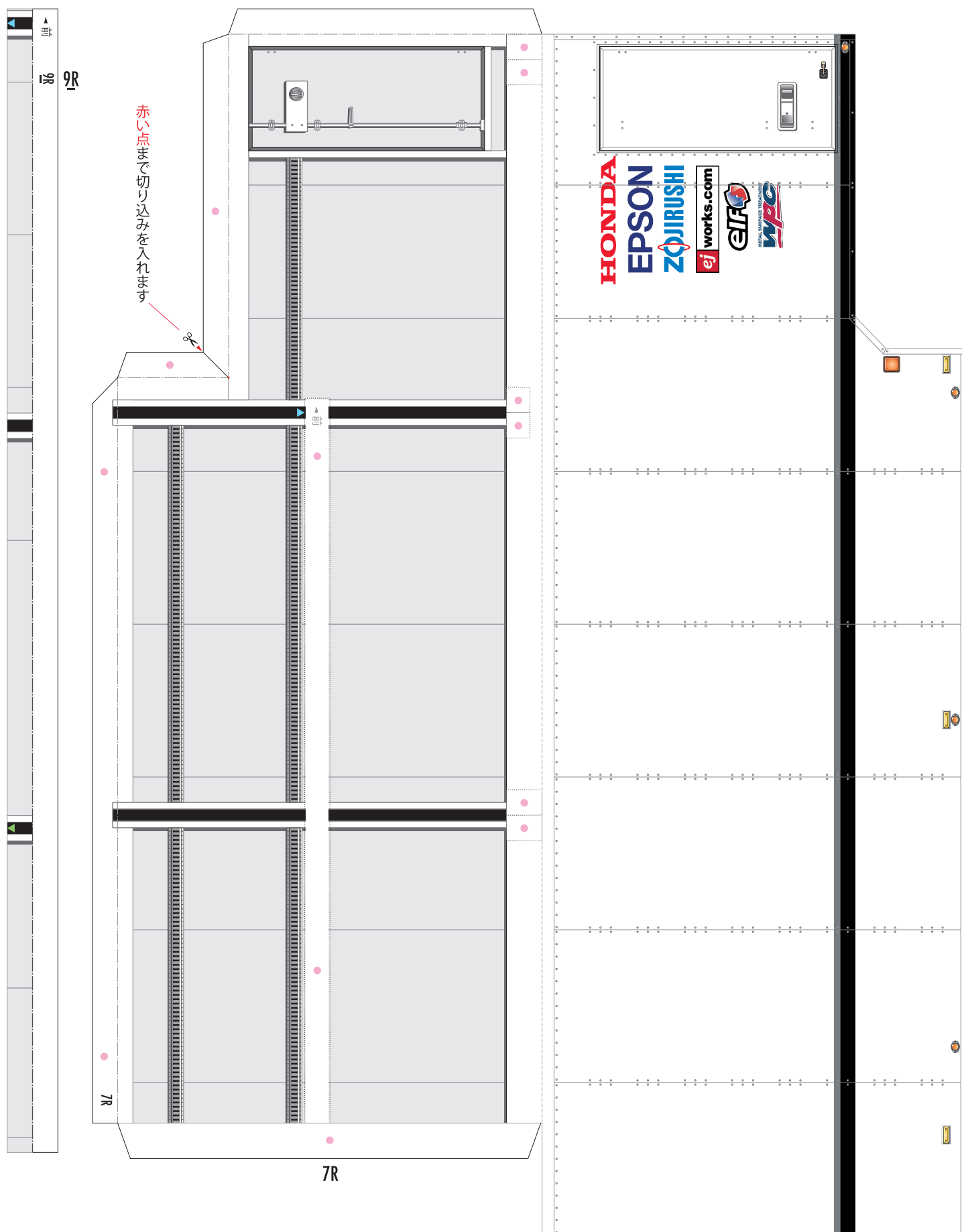
# Epson Nakajima Racing Transportor

1:43 Scale Paper Craft Sheet 2



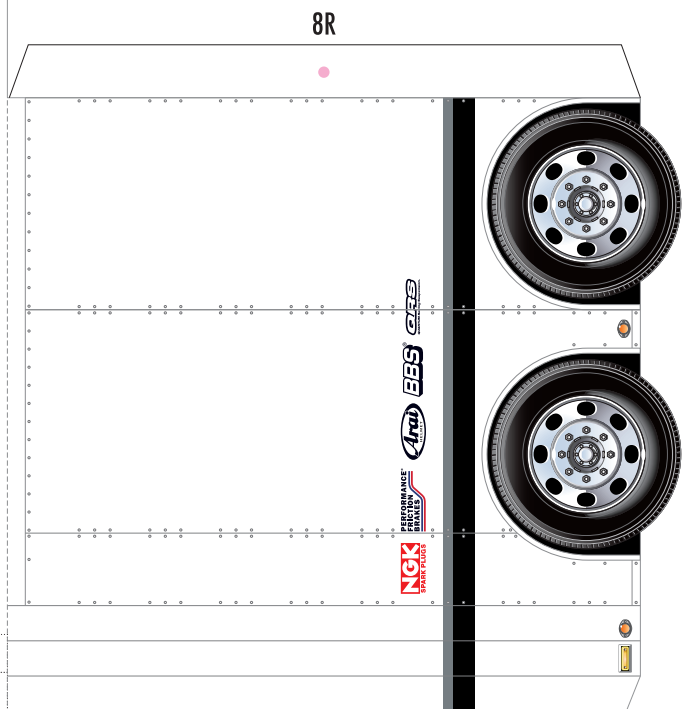
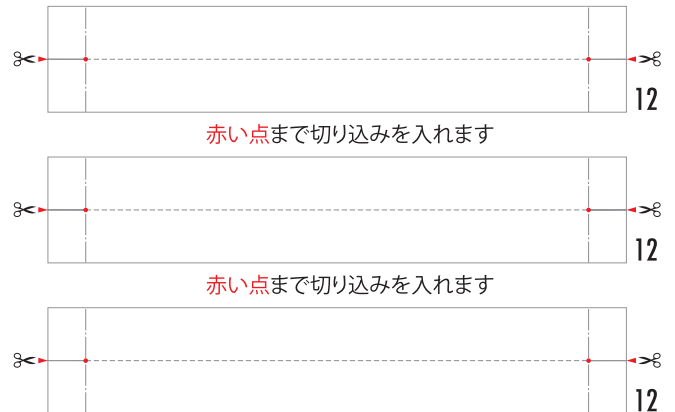
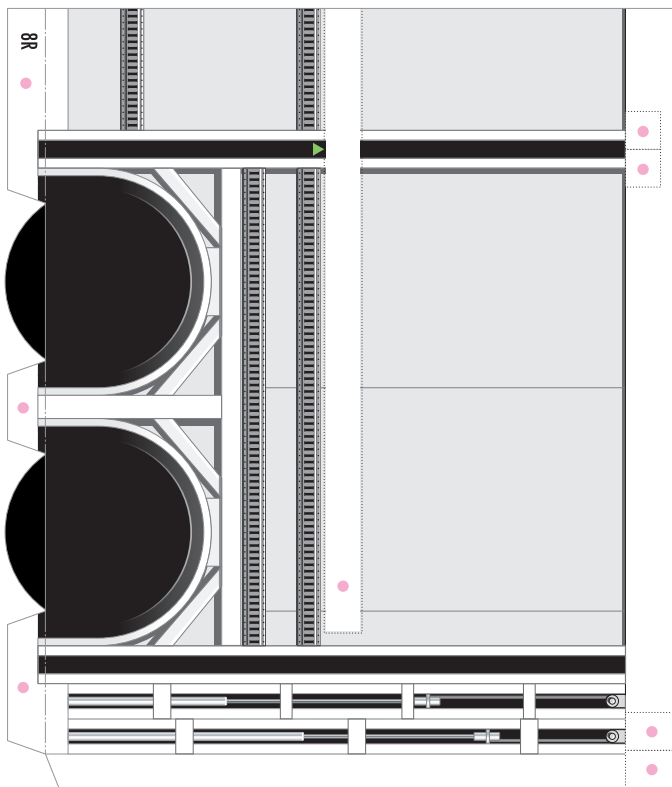
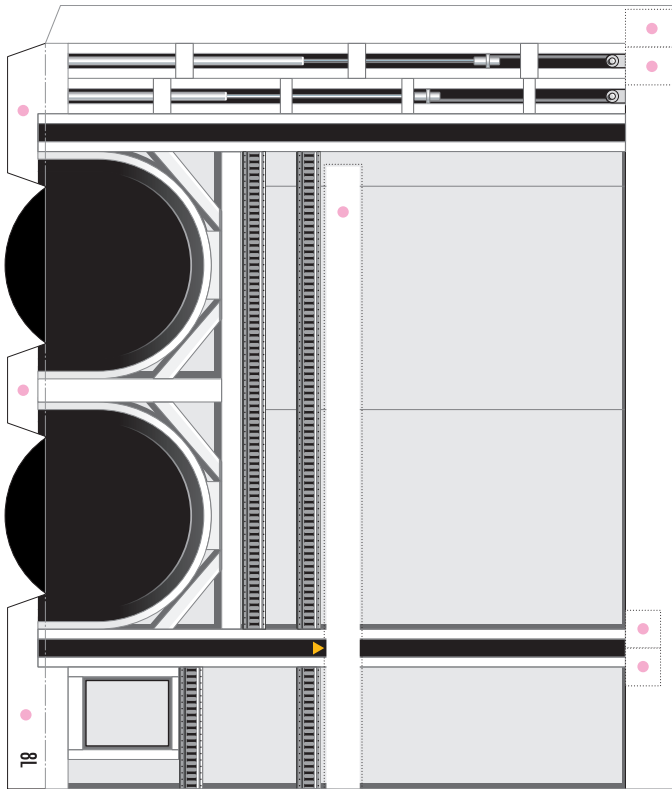
# Epson Nakajima Racing Transportor

1:43 Scale Paper Craft Sheet 3



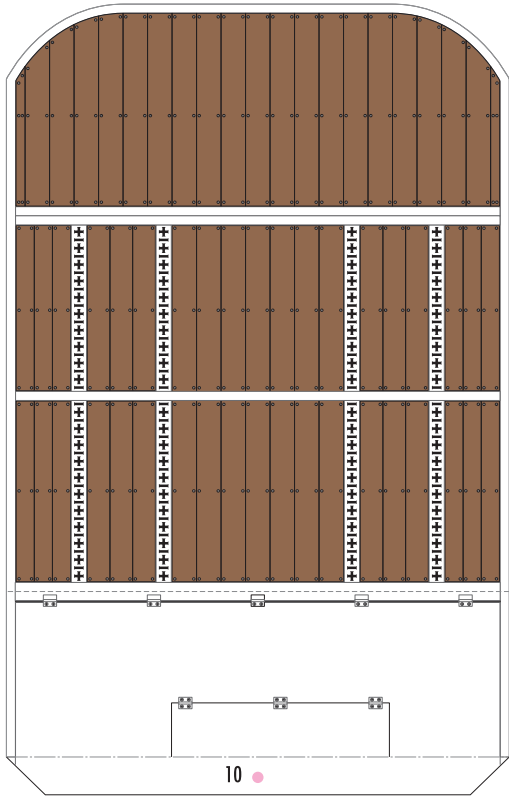
# Epson Nakajima Racing Transportor

1:43 Scale Paper Craft Sheet 4



# Epson Nakajima Racing Transportor

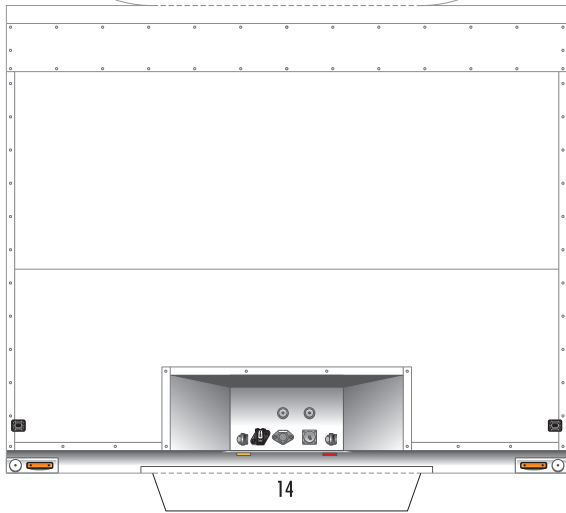
1:43 Scale Paper Craft Sheet 5



10

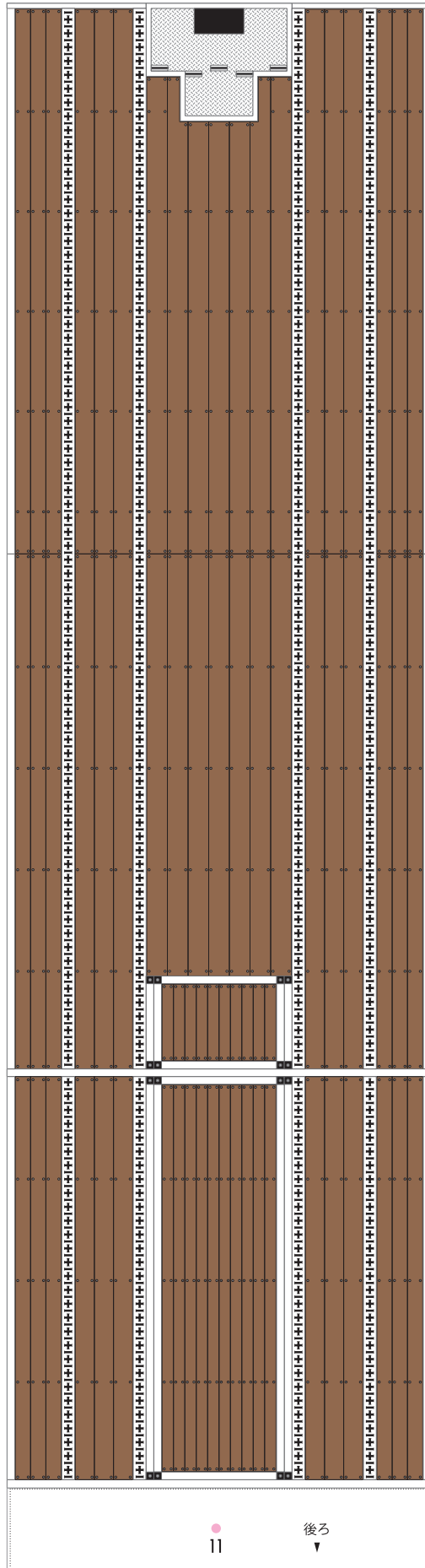


14



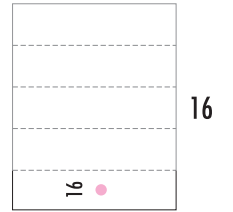
14

- 切る線
  - - - 山折り
  - · - 谷折り
  - ◻ ● のりしろ
  - ..... 貼り合わせガイド線
  - > ✂ 切り抜くところ
  - ▶ ✂ 切り込みを入れるところ
- Lは左側、Rは右側を表しています

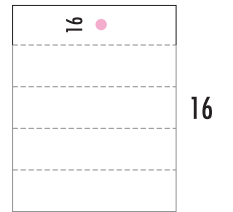


11

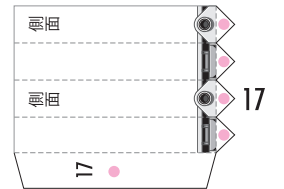
後ろ



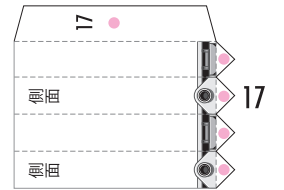
16



16



17



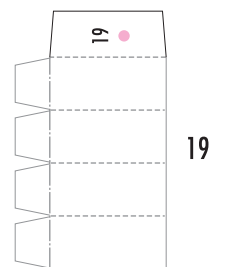
17



18



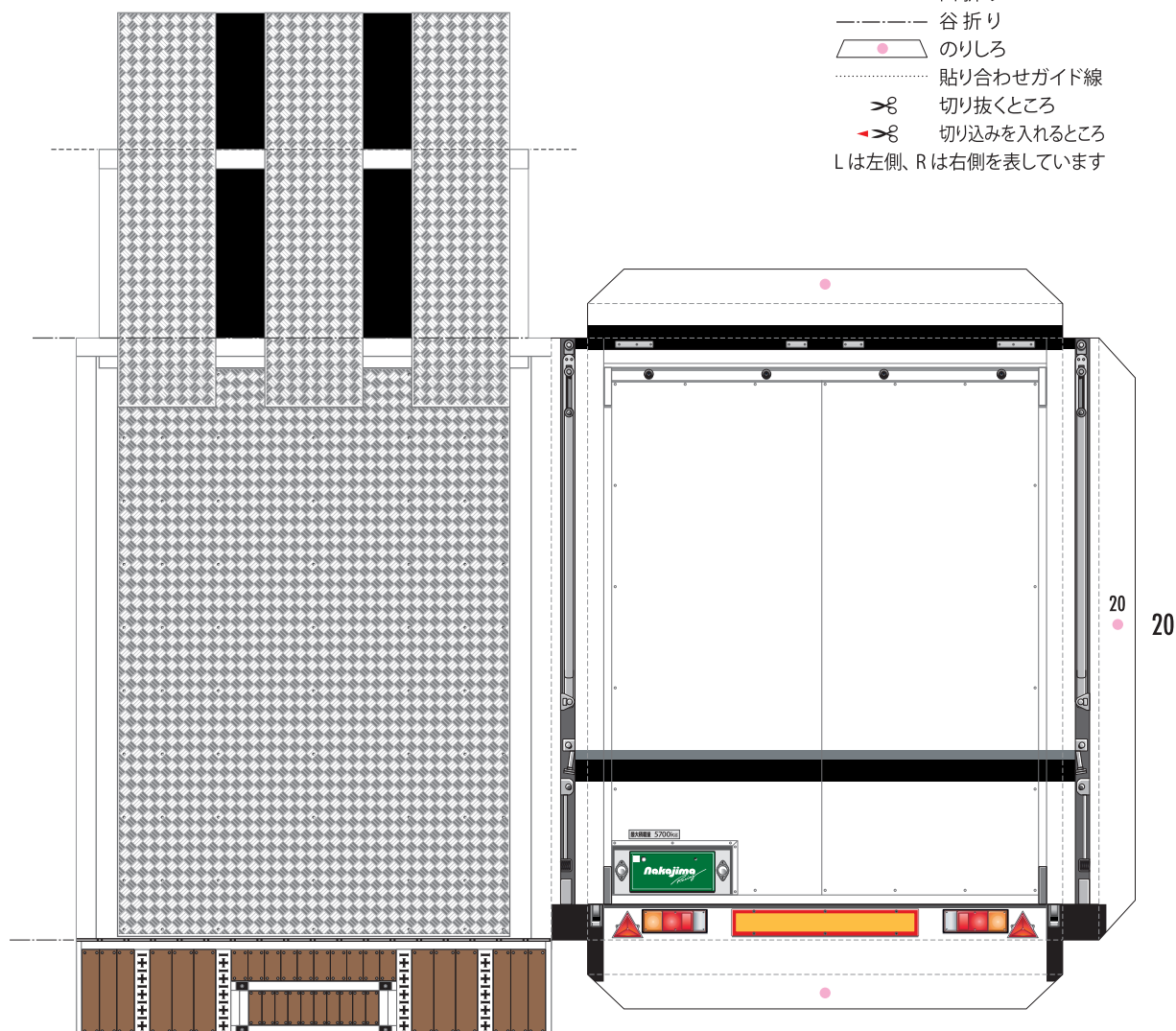
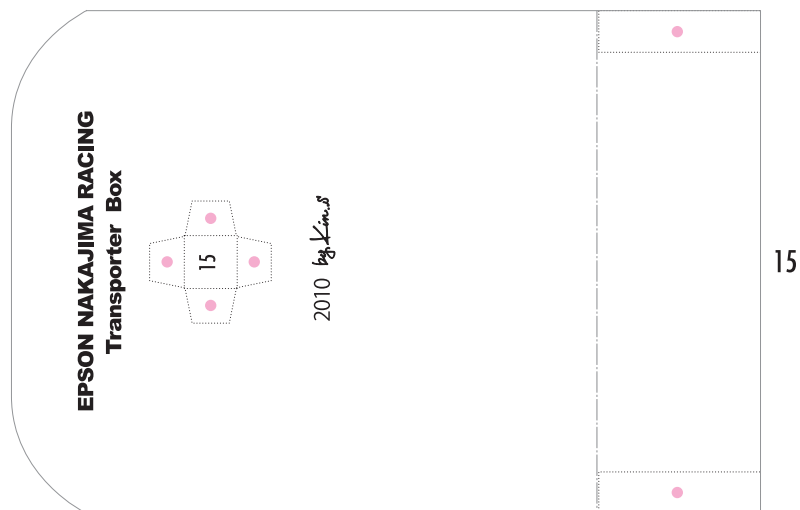
18



19

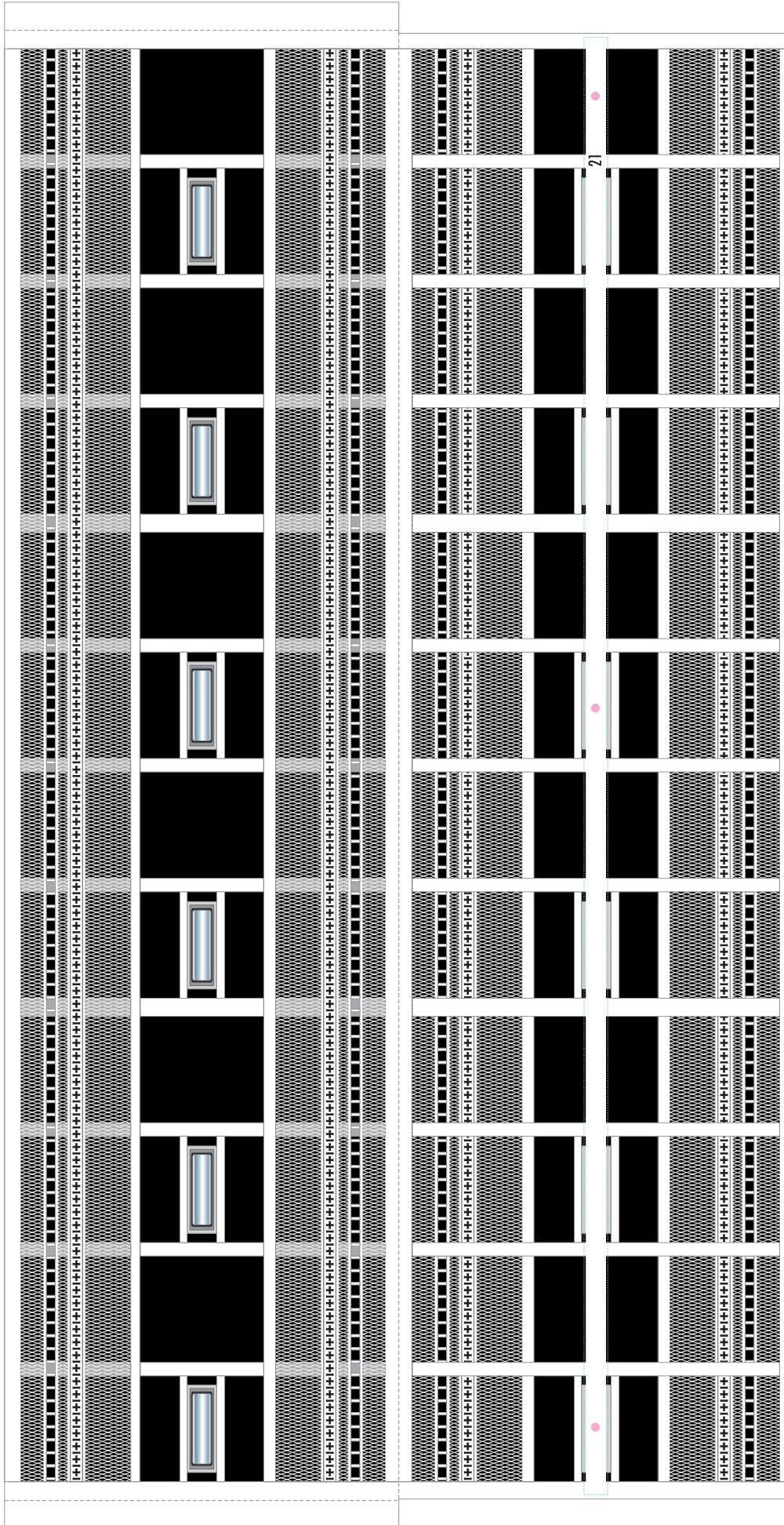
# Epson Nakajima Racing Transportor

1:43 Scale Paper Craft Sheet 6



# Epson Nakajima Racing Transportor

1:43 Scale Paper Craft Sheet 7



21

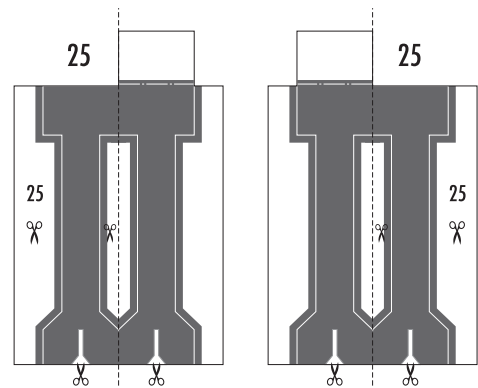
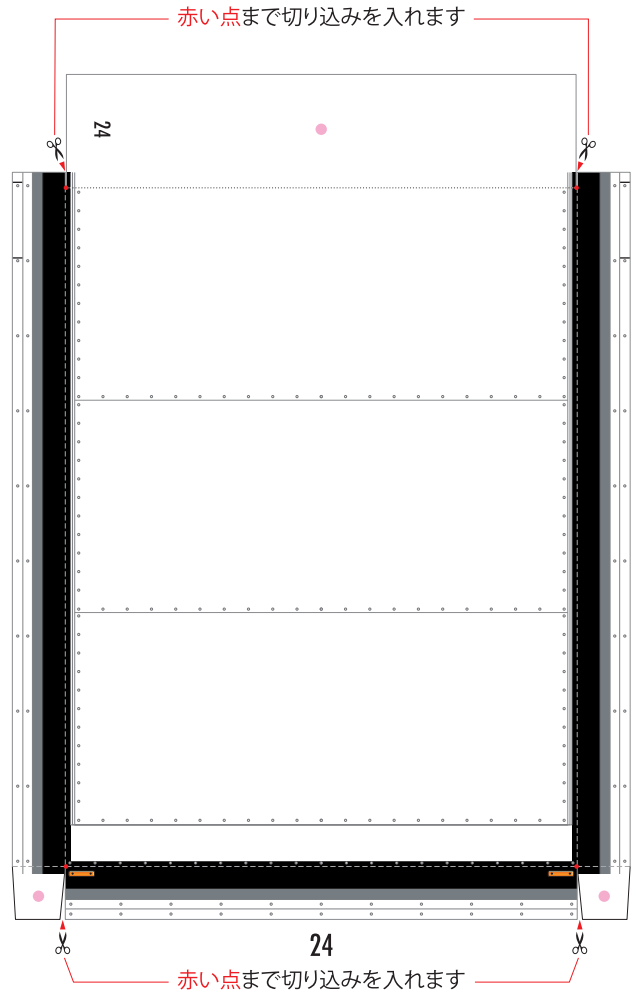
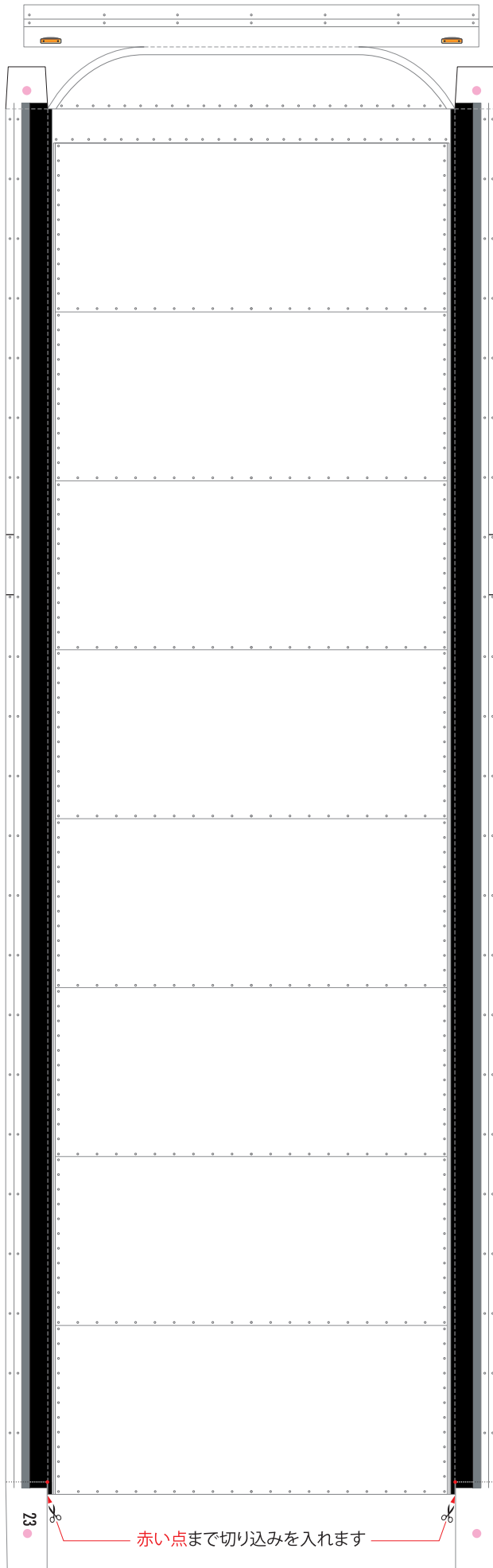


22

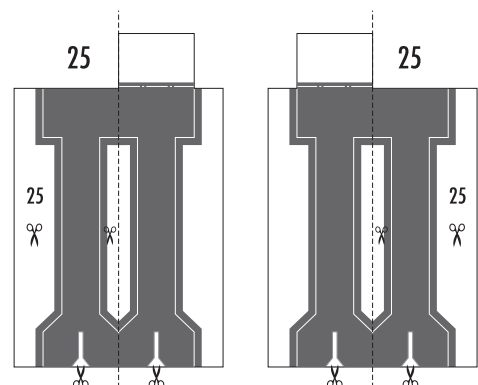
22

# Epson Nakajima Racing Transportor

1:43 Scale Paper Craft Sheet 8



外側の線を切り取り、中央の山折り線に沿って裏同士貼り合わせてから、切取ります





# Epson Nakajima Racing Transportor

EPSON HSV-010GT 1:43 Scale Paper Craft Sheet 9

