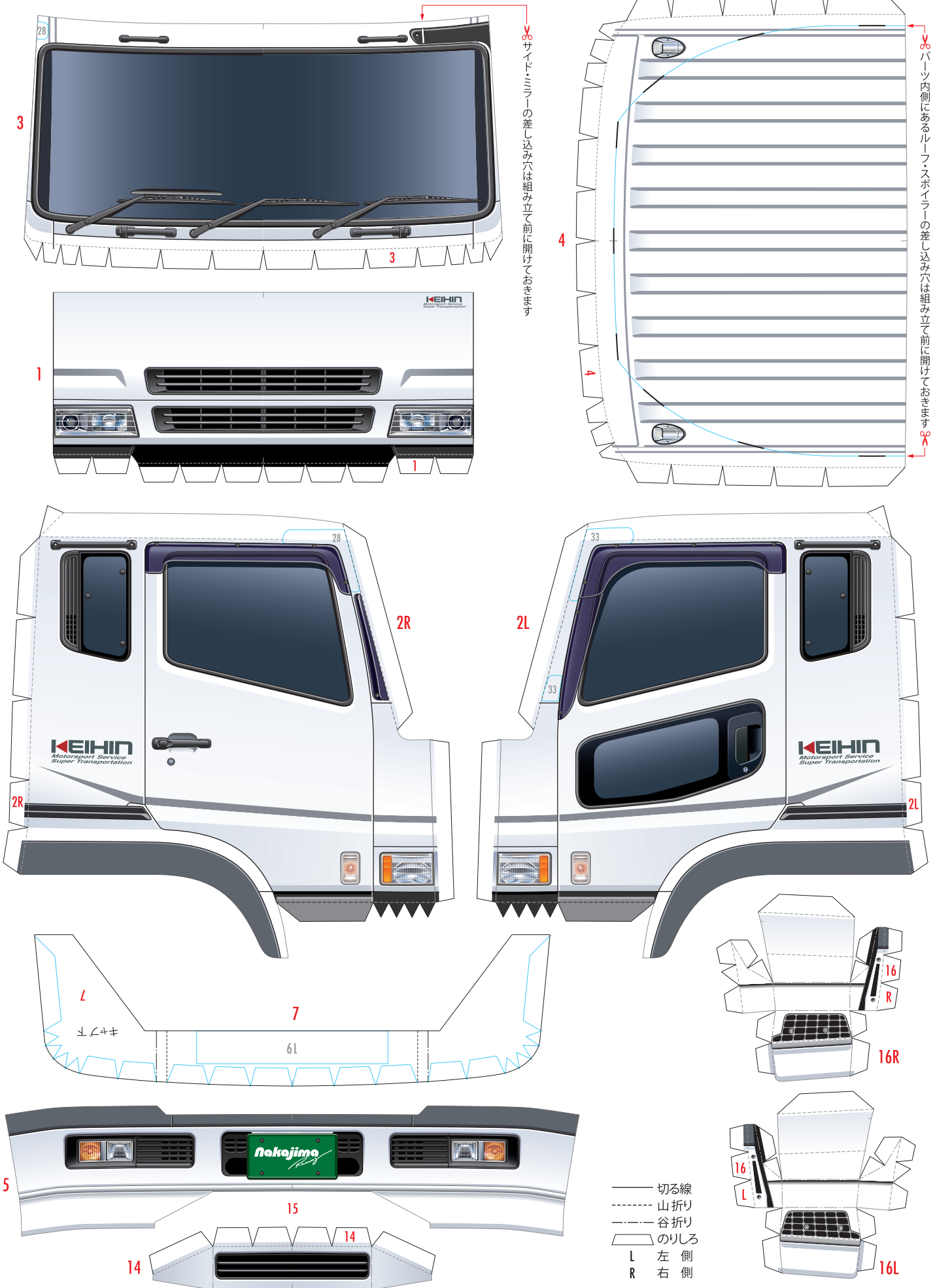
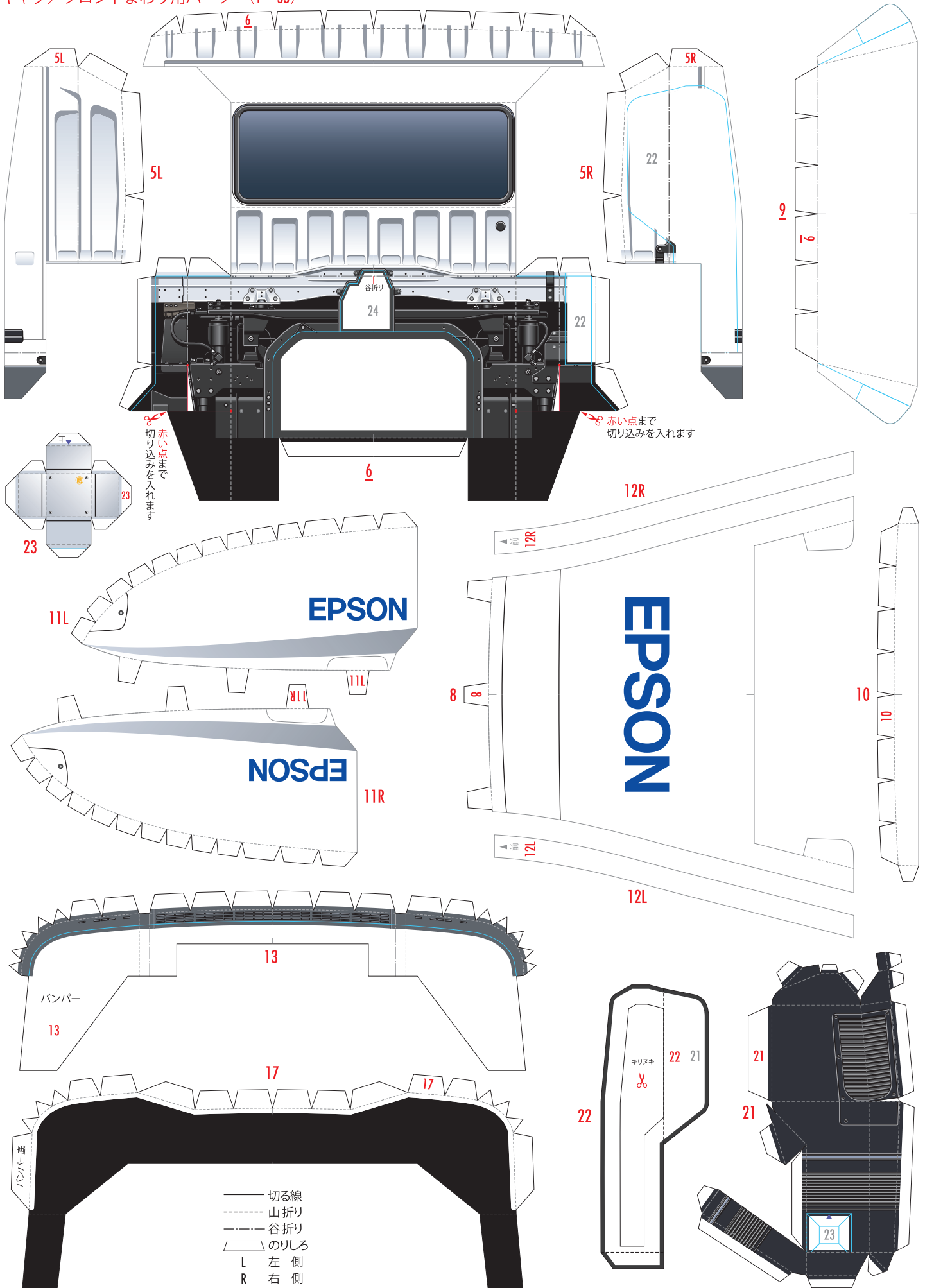


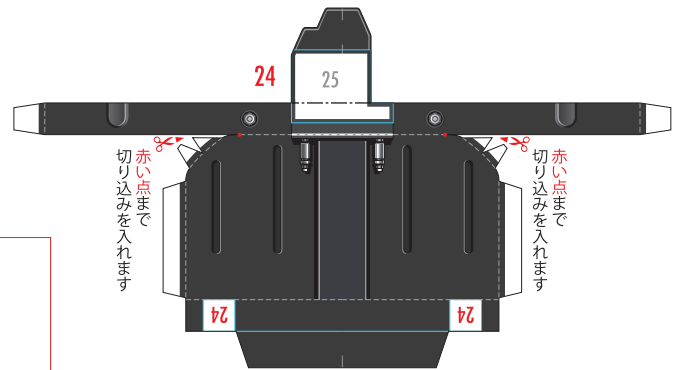
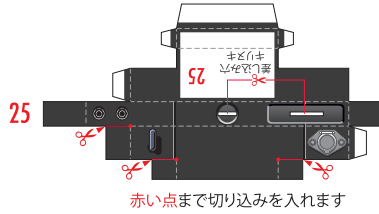
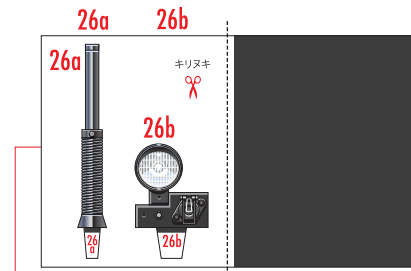
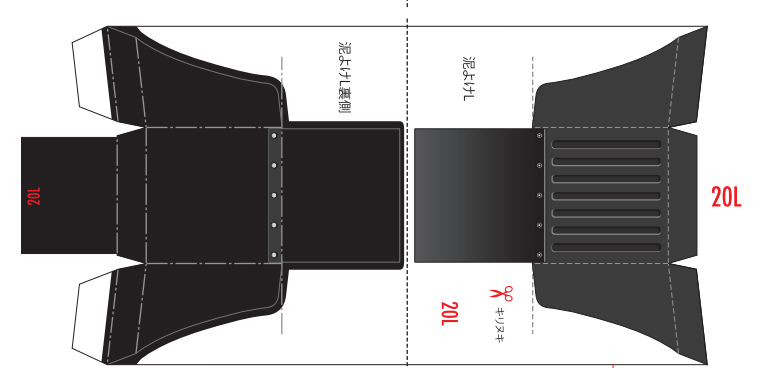
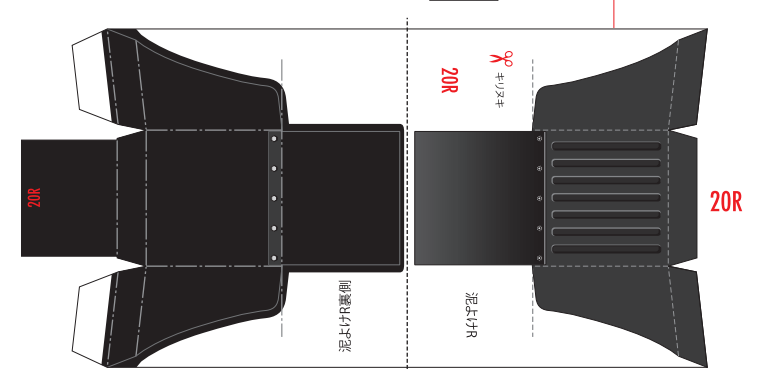
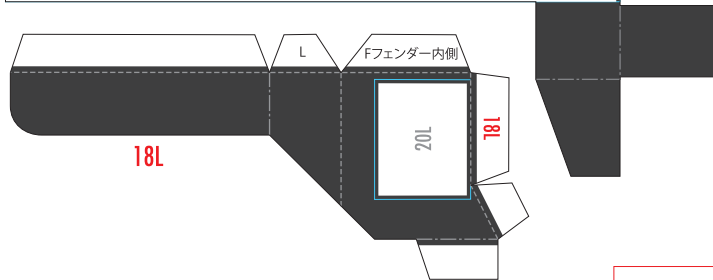
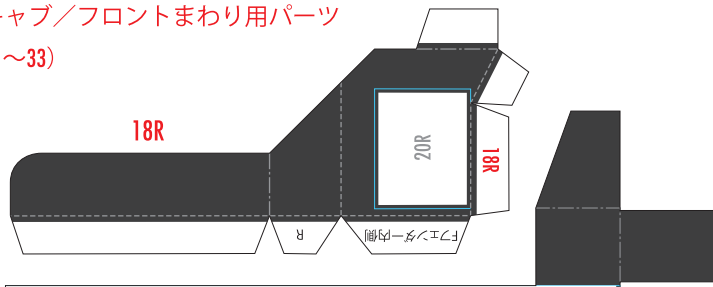
キャブ/フロントまわり用パーツ (1~33)



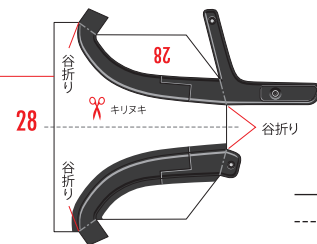
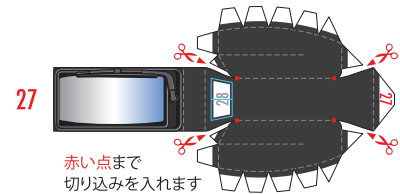
キャブ/フロントまわり用パーツ (1~33)



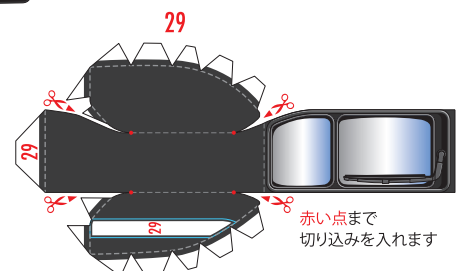
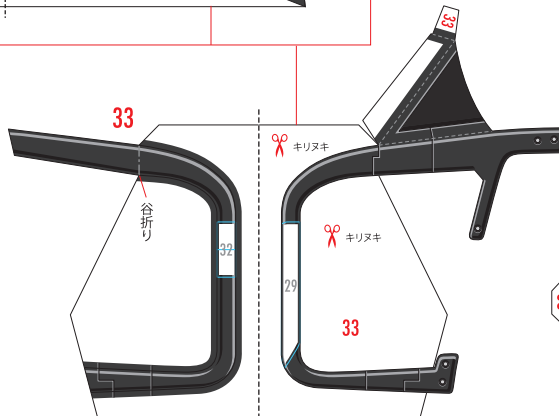
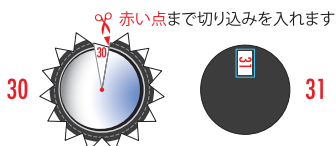
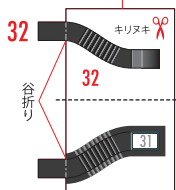
キャブ/フロントまわり用パーツ (1~33)



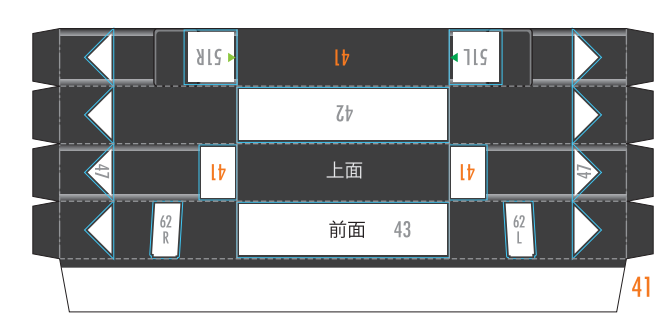
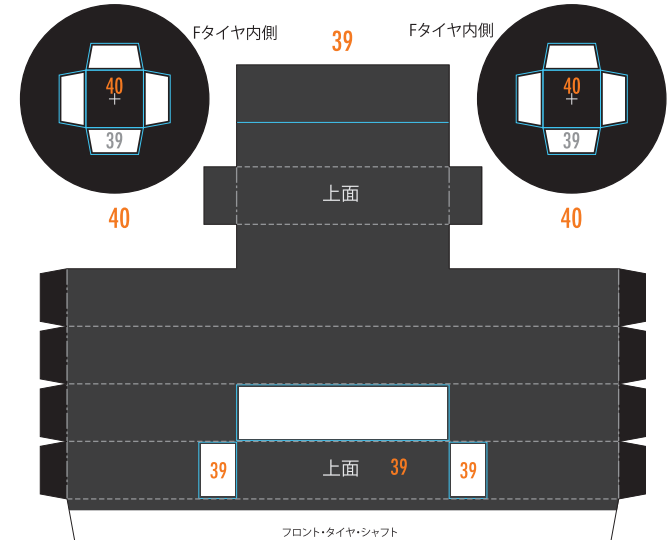
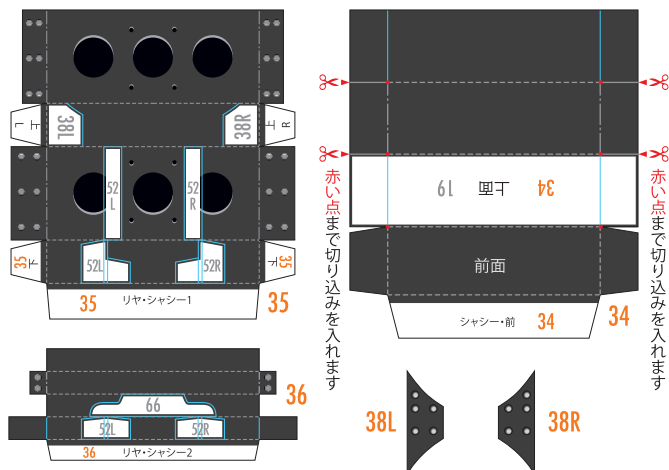
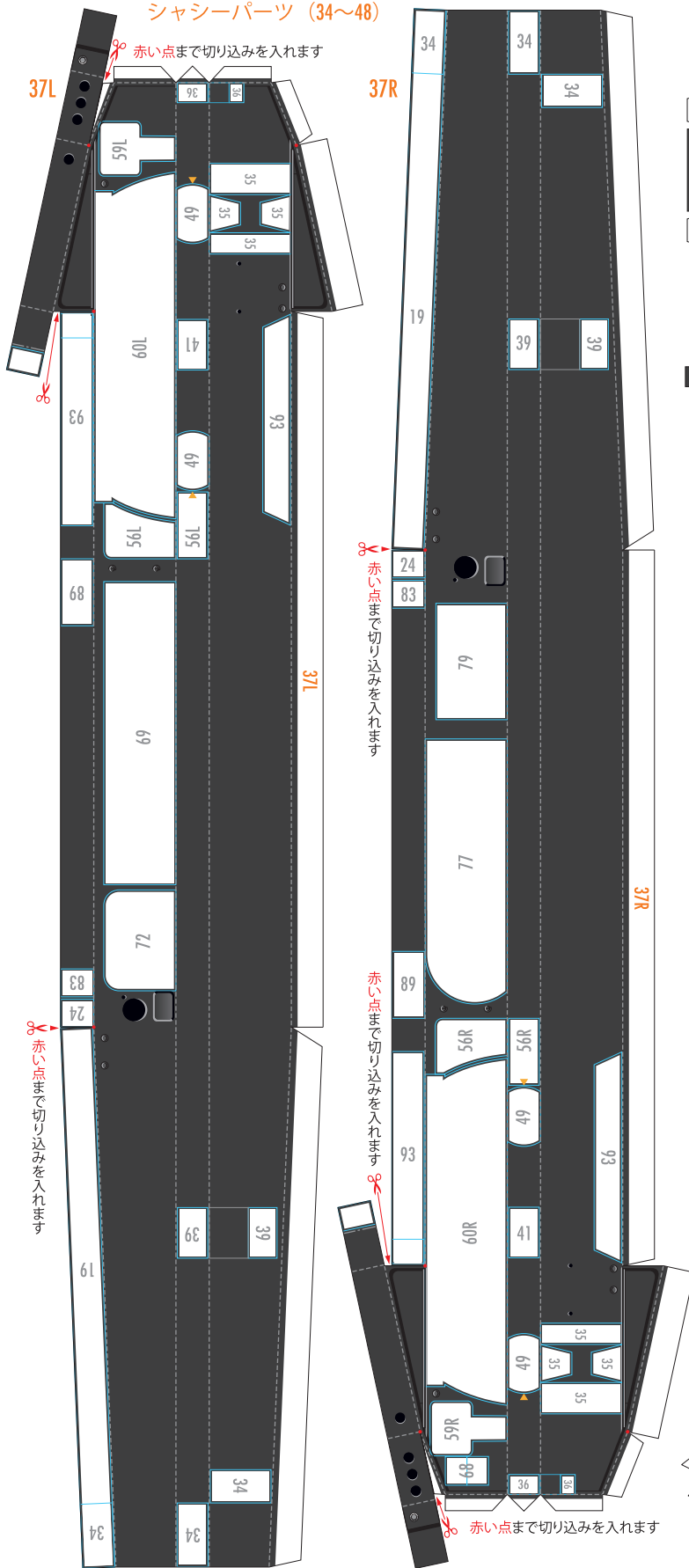
外側の線を切り取り、はみ出しているところ以外の裏同士を山折り線に沿って貼り合わせてから、はさみマークがある面を切り取ります



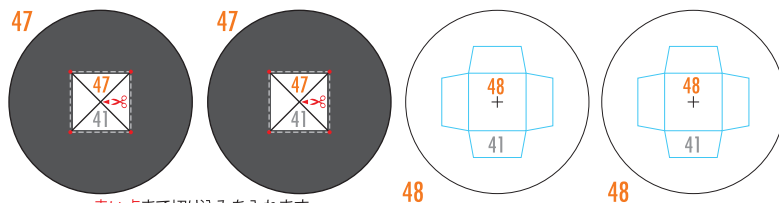
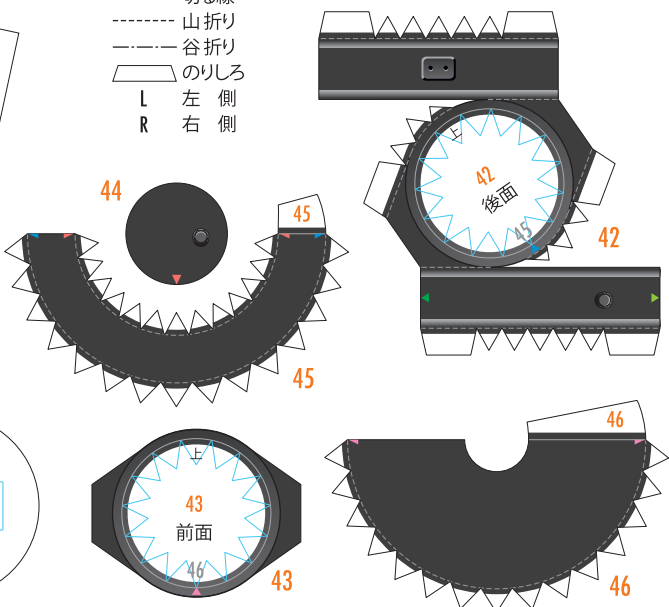
- 切る線
- - - 山折り
- · - 谷折り
- ◁ のりしろ
- L 左側
- R 右側



シャシーパーツ (34~48)

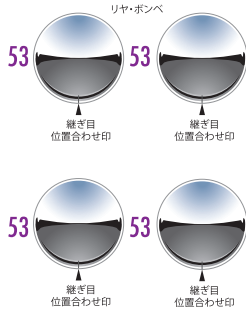
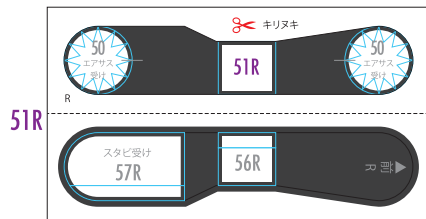
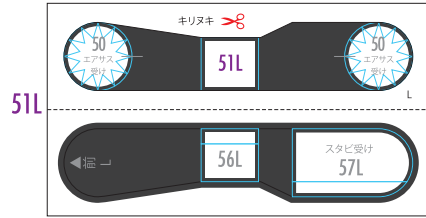
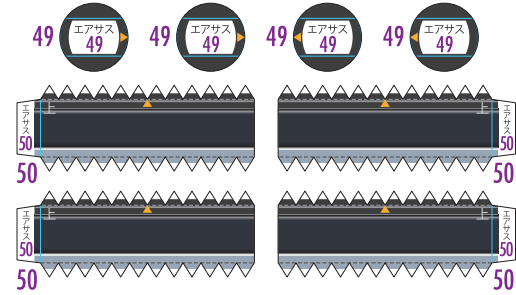


- 切る線
- - - 山折り
- - - 谷折り
- のりしろ
- L 左側
- R 右側

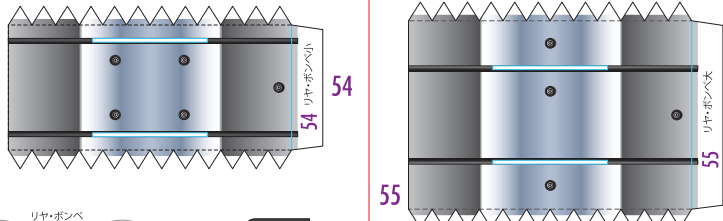
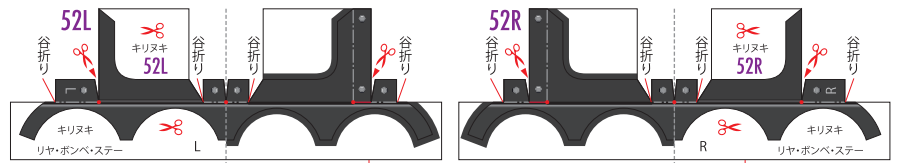


赤い点まで切り込みを入れます

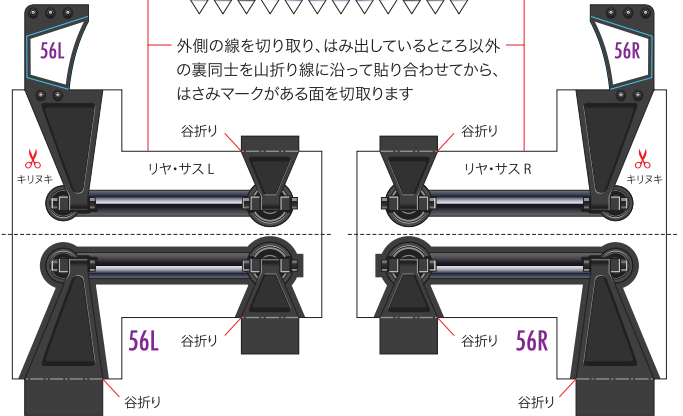
リヤ・サスペンションパーツ (49~62)



外側の線を切り取り、山折り線に沿って裏同士を貼り合わせてから、はさみマークがある面を切り取ります



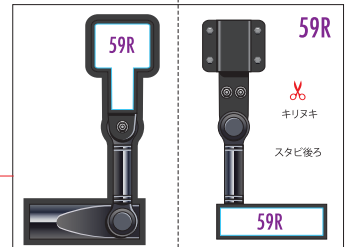
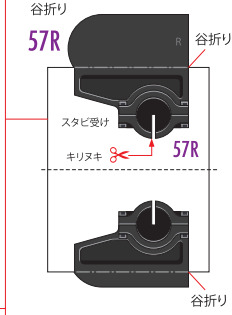
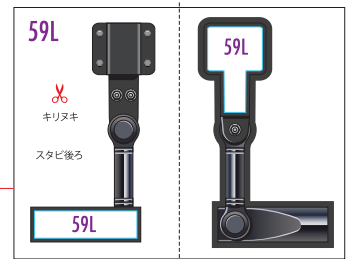
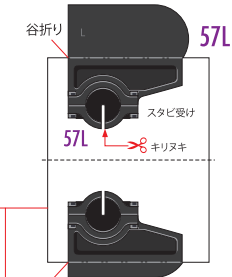
— 切る線
- - - 山折り
- - - 谷折り
□ のりしろ
L 左側
R 右側



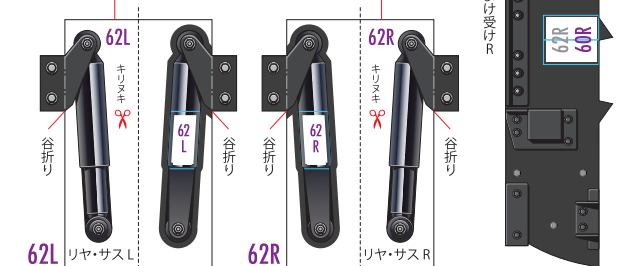
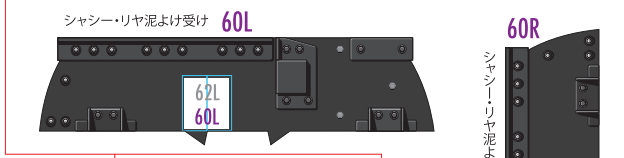
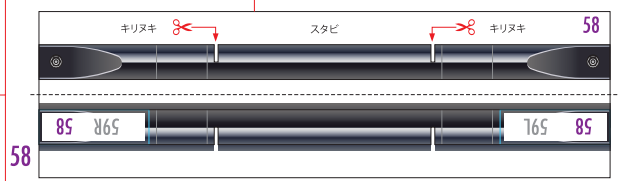
外側の線を切り取り、はみ出しているところ以外の裏同士を山折り線に沿って貼り合わせてから、はさみマークがある面を切り取ります



外側の線を切り取り、はみ出しているところ以外の裏同士を山折り線に沿って貼り合わせてから、はさみマークがある面を切り取ります

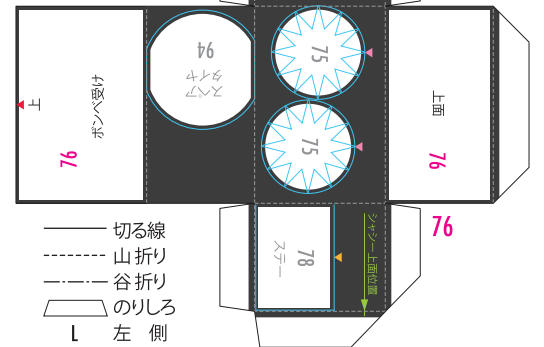
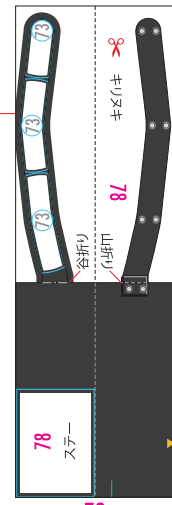
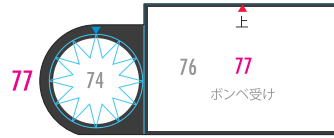
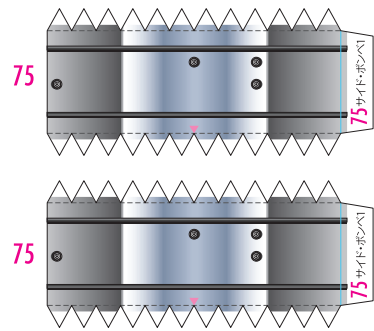
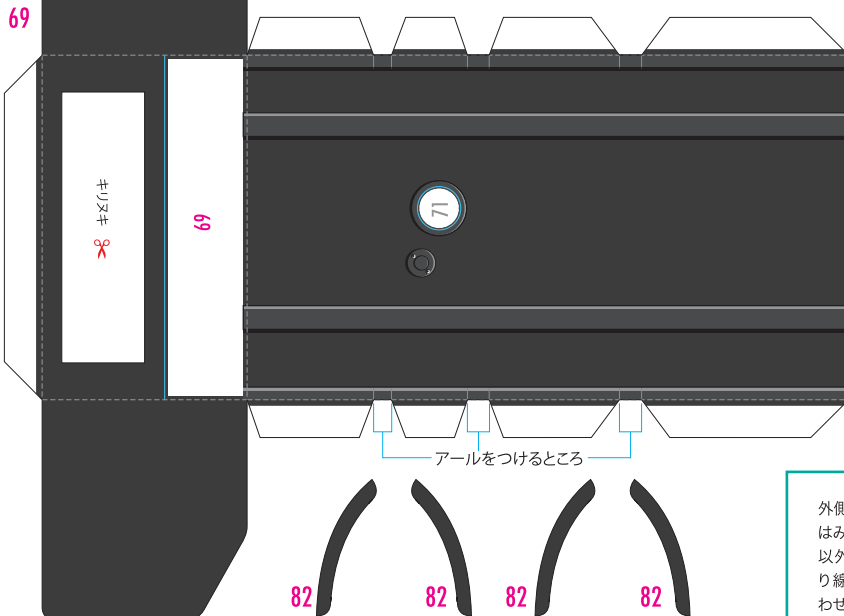
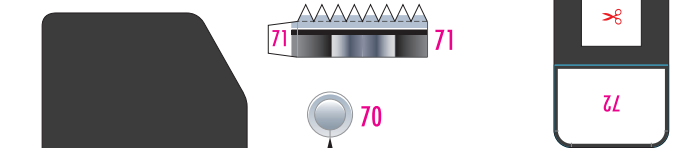
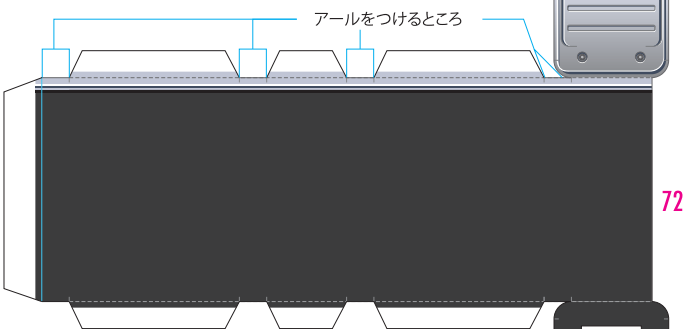
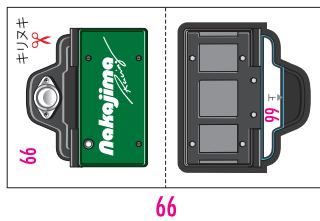
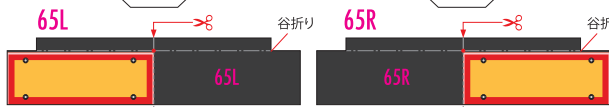
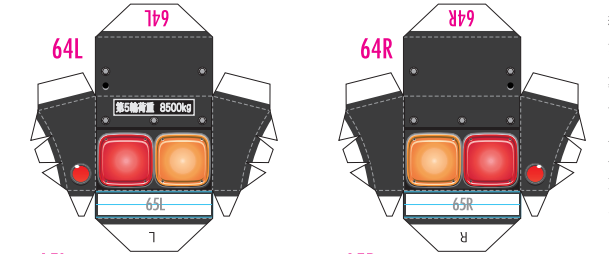
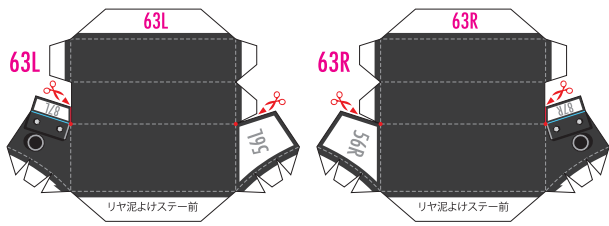


外側の線を切り取り、山折り線に沿って裏同士を貼り合わせてから、はさみマークがある面を切り取ります

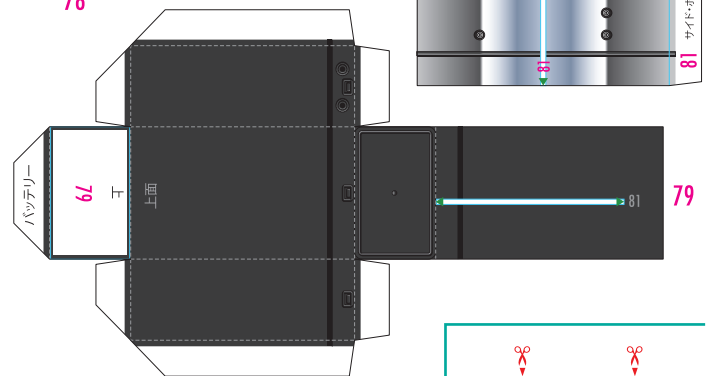
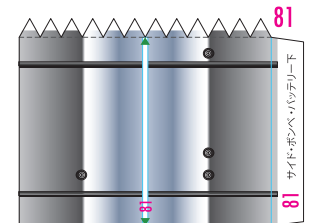
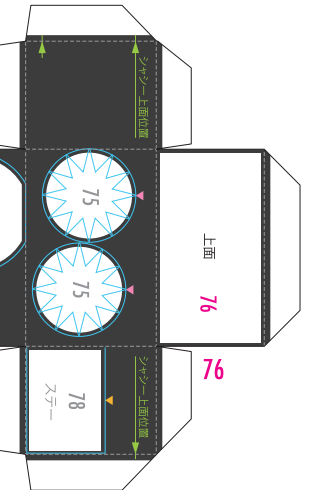
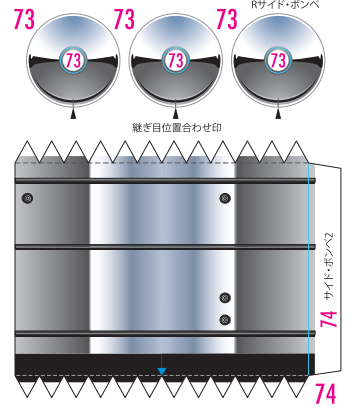
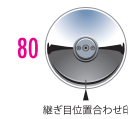


シャシー・リヤ泥よけ受け R

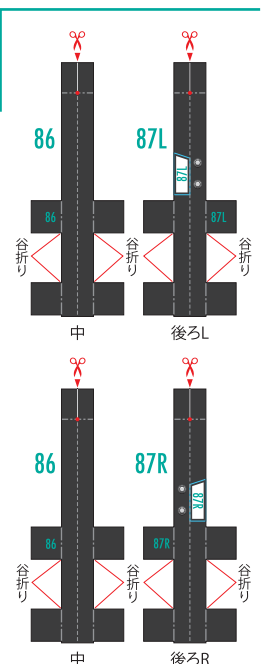
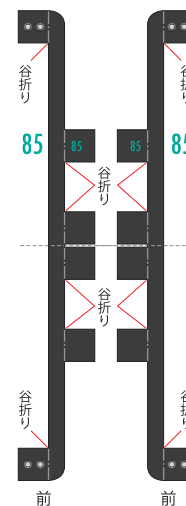
付属パーツ (63~82)



— 切る線
 - - - 山折り
 - - - 谷折り
 のりしろ
 L 左側
 R 右側

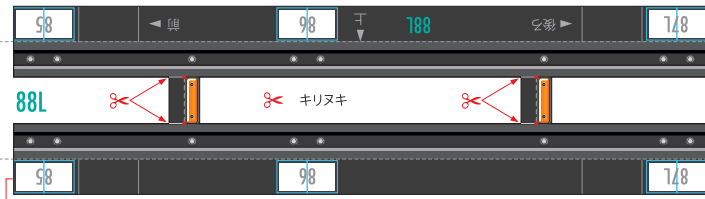


デッキ/カプラパーツ (83~93)

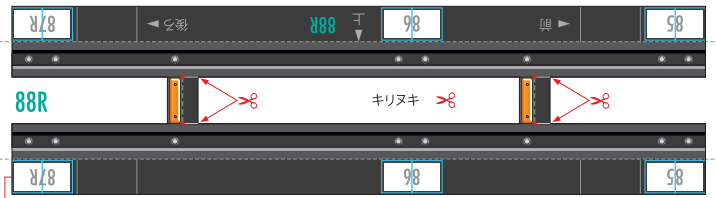


外側の線を切り取り、はみ出しているところ以外の裏同士を山折り線に沿って貼り合わせます

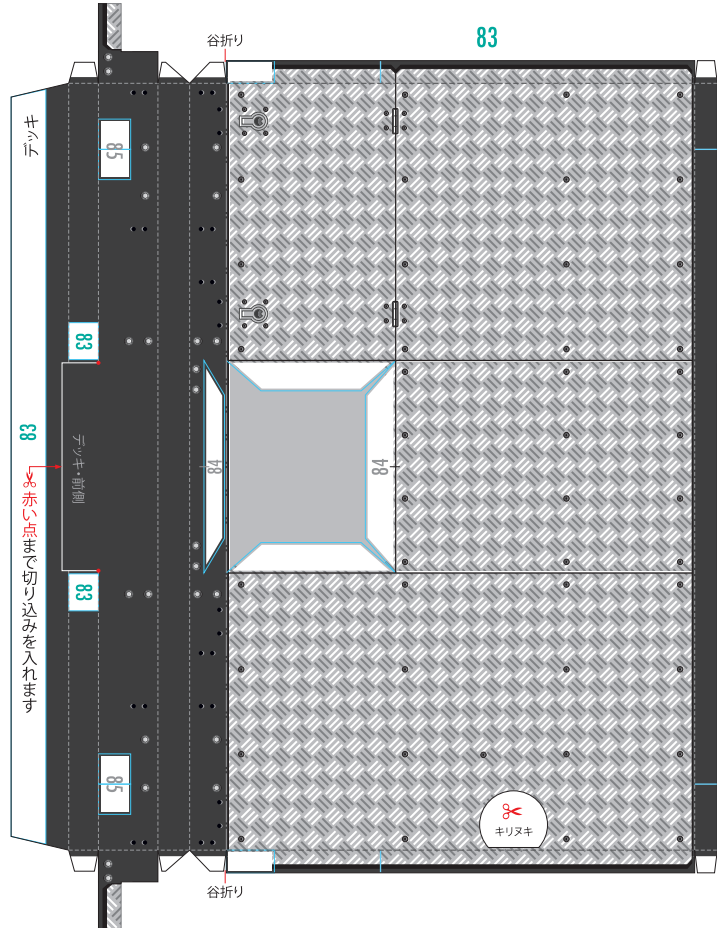
デッキ/カプラパーツ (83~93)



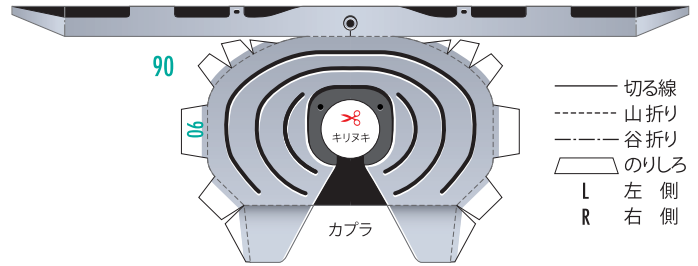
外側の線を切り取り、山折り線に沿って裏同士を貼り合わせます



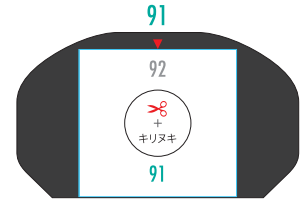
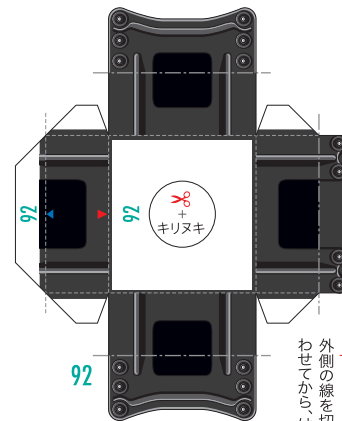
外側の線を切り取り、山折り線に沿って裏同士を貼り合わせます



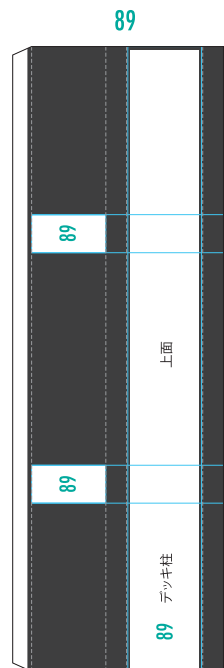
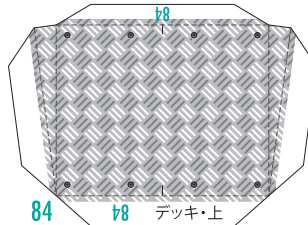
赤い点まで切り込みを入れます



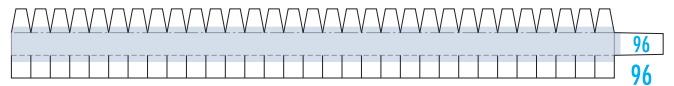
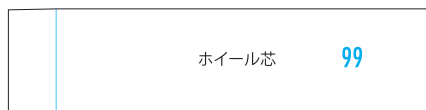
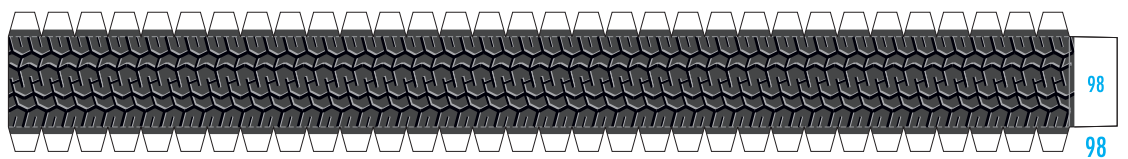
— 切る線
- - - 山折り
- · - 谷折りのりしろ
L 左側
R 右側



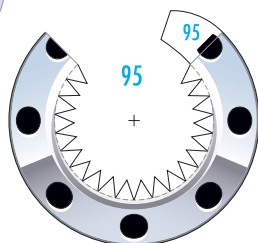
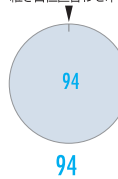
外側の線を切り取り、山折り線に沿って裏同士を貼り合わせてから、はさみマークがあるところを切り抜きます



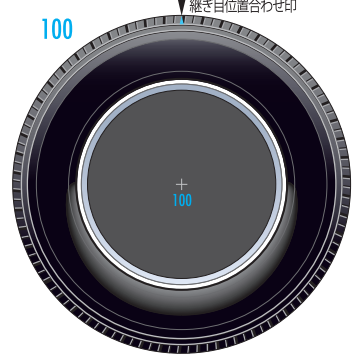
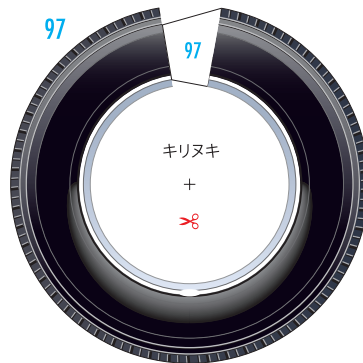
スペア・タイヤパーツ 94~100



継ぎ目位置合わせ印

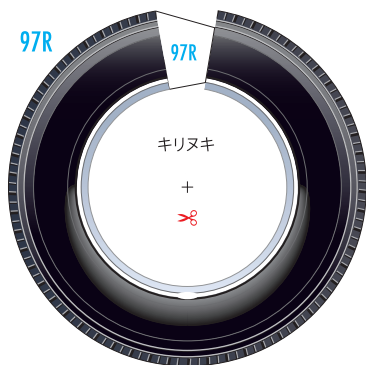
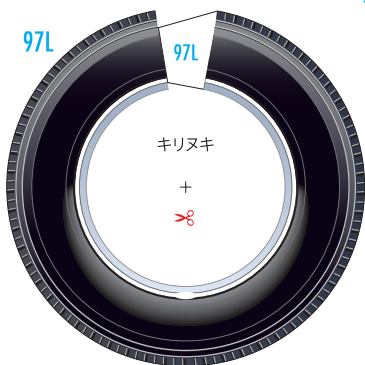


スペアタイヤ用ホイール

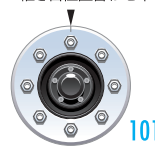


継ぎ目位置合わせ印

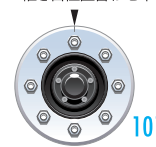
フロント・タイヤパーツ 96~99/101~103



継ぎ目位置合わせ印

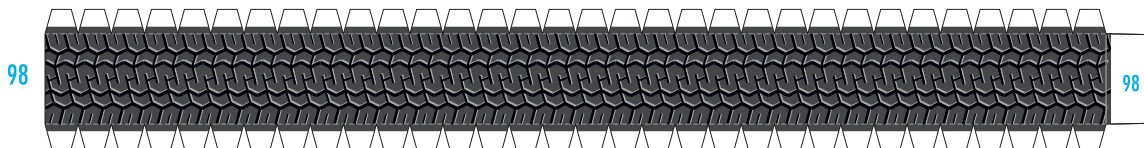
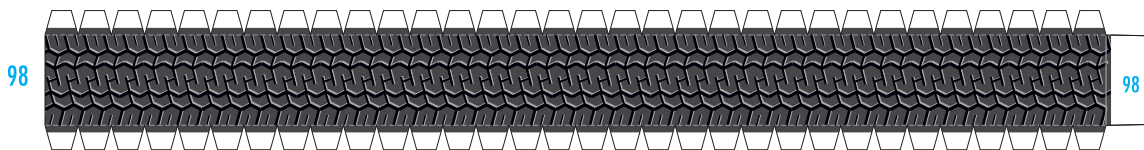
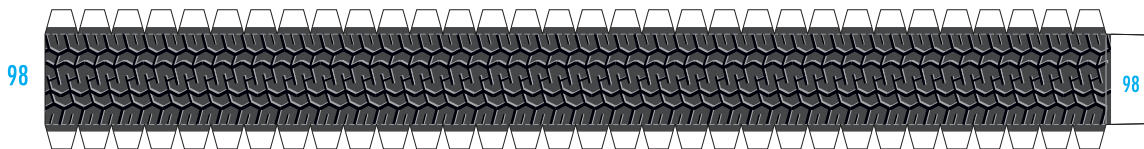
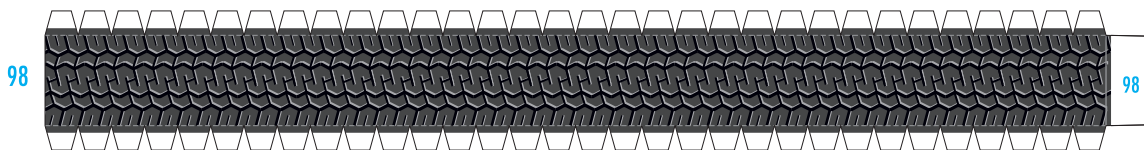
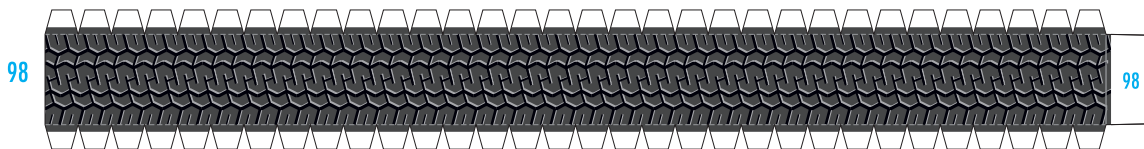
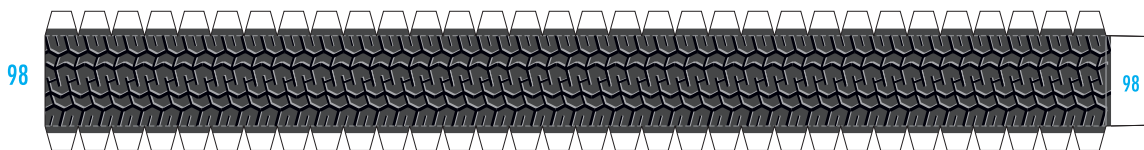
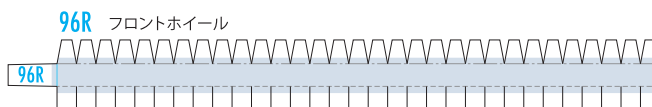
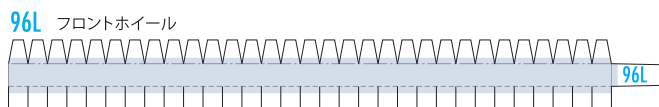
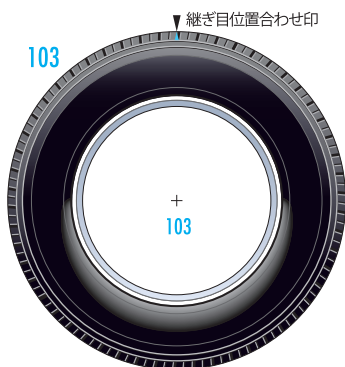
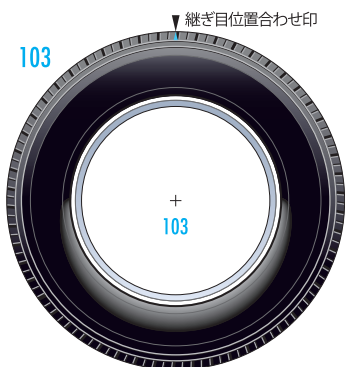
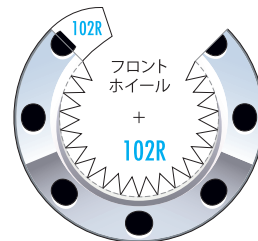
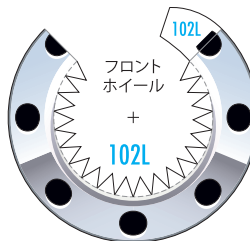


継ぎ目位置合わせ印



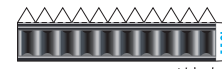
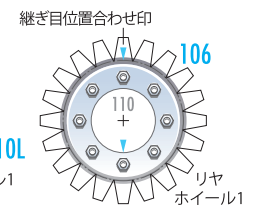
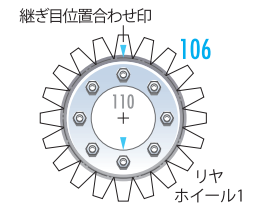
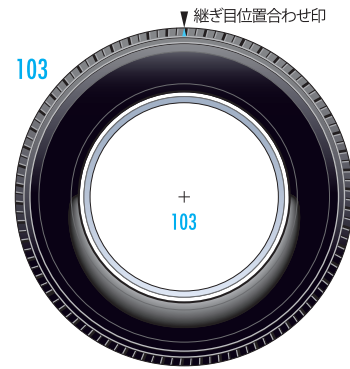
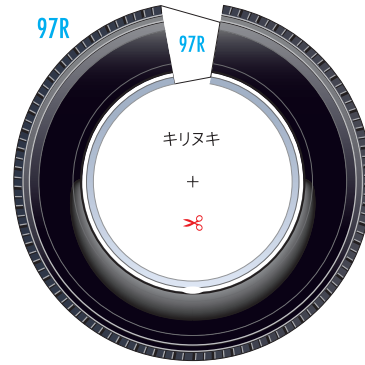
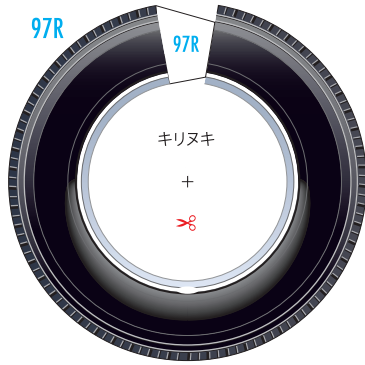
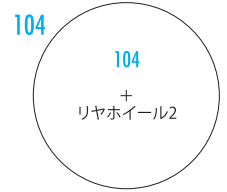
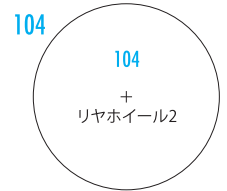
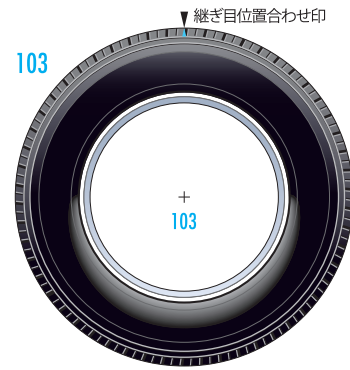
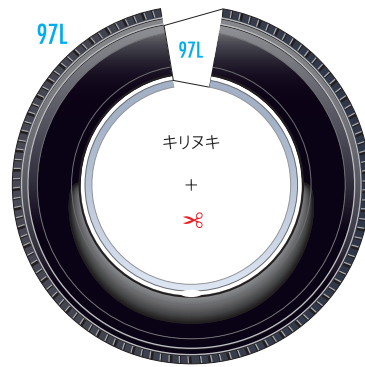
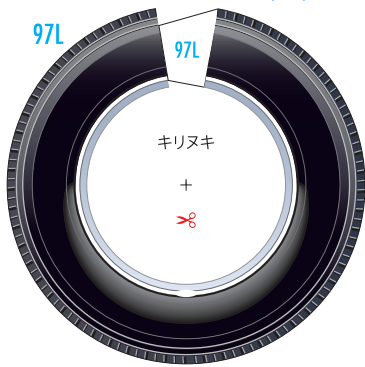
フロントホイール

フロントホイール

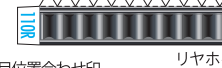
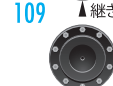


— 切る線
 - - - 山折り
 - - - 谷折り
 のりしろ
 L 左側
 R 右側

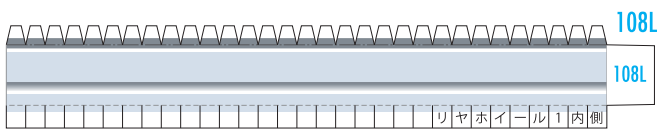
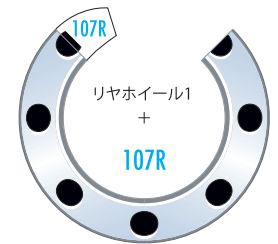
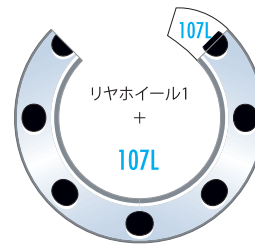
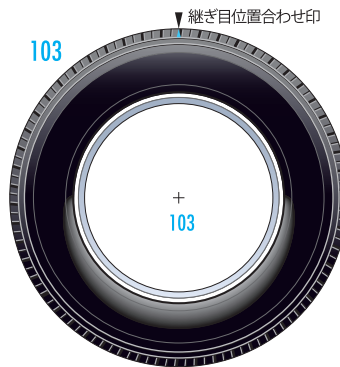
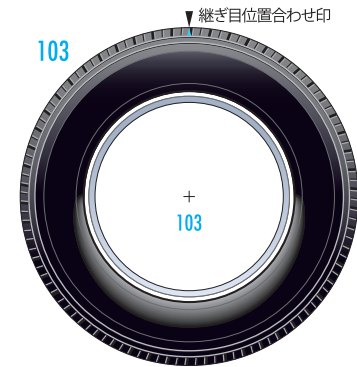
リヤ・タイヤパーツ 97/98/103~111



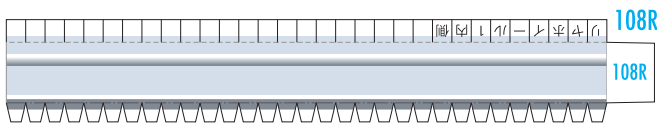
リヤホイール1



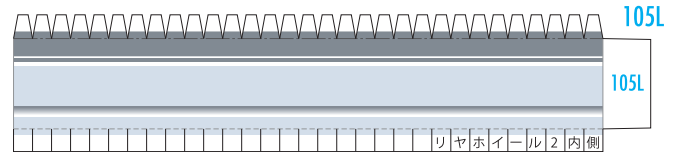
リヤホイール1



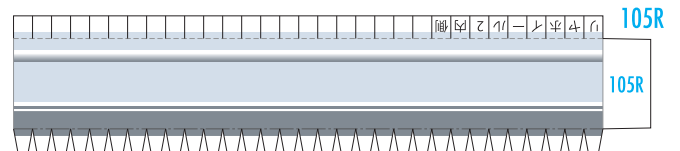
リヤホイール1 内側



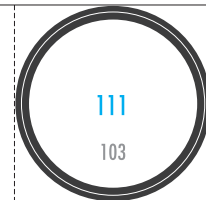
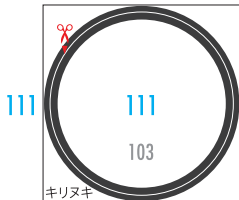
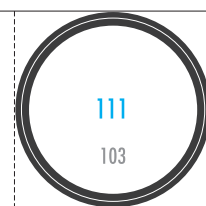
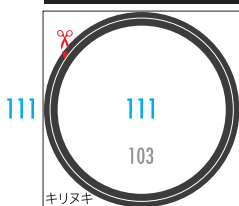
リヤホイール1 内側



リヤホイール2 内側



リヤホイール2 内側



— 切る線
 - - - 山折り
 ····· 谷折り
 ◡ ◢ ◣ ◤ のりしろ
 L 左側
 R 右側