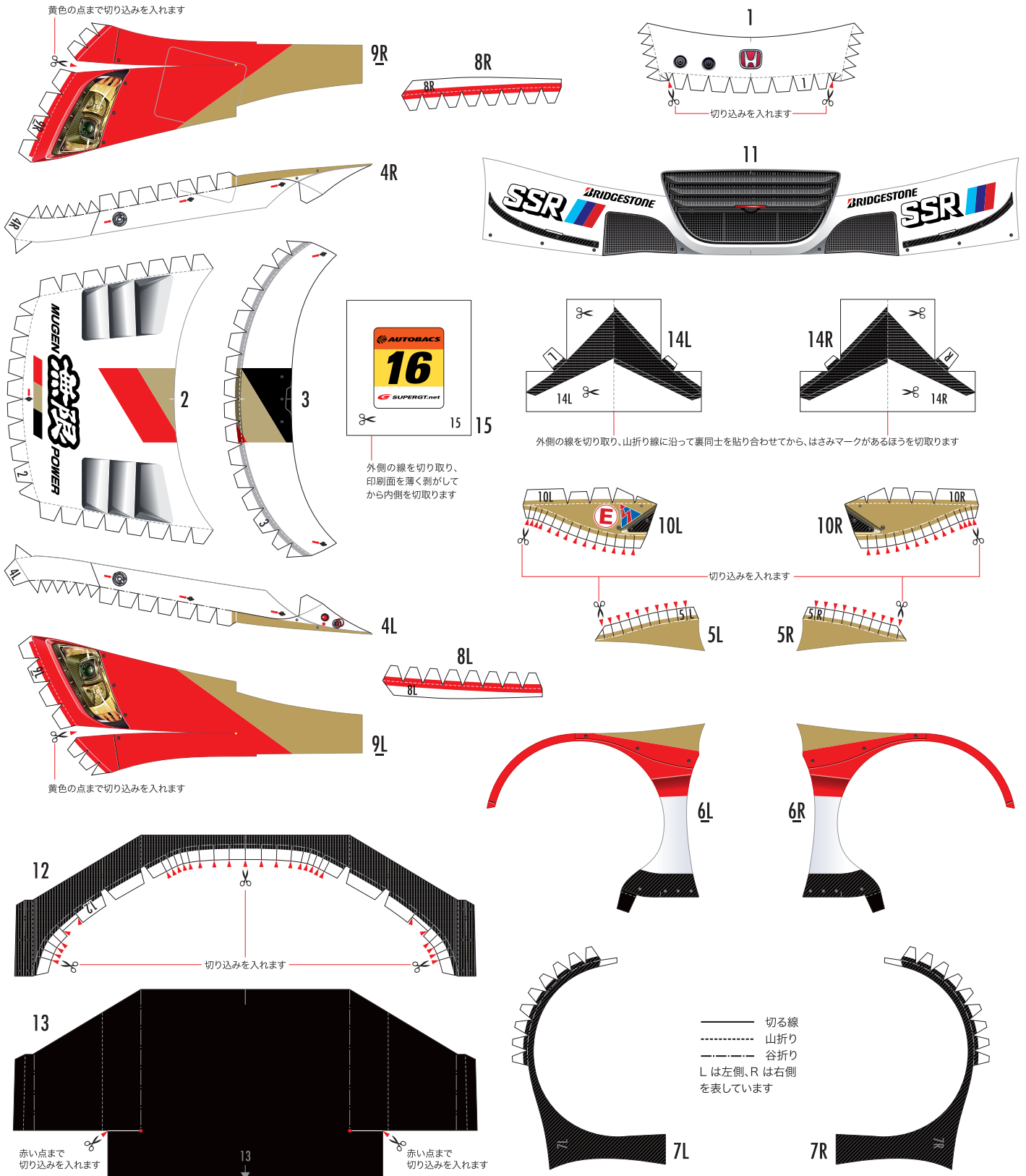
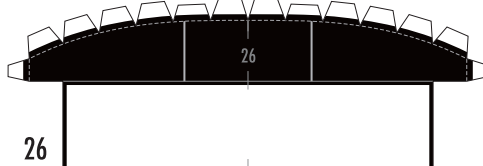
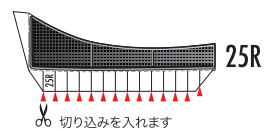
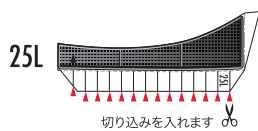
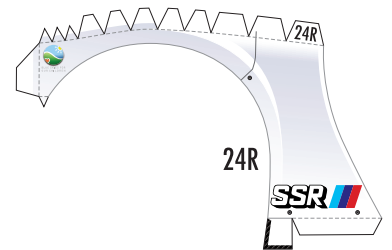
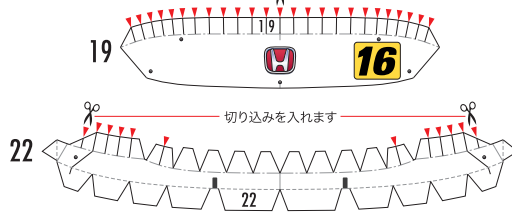
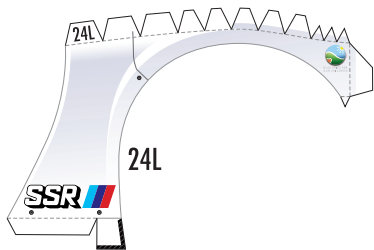
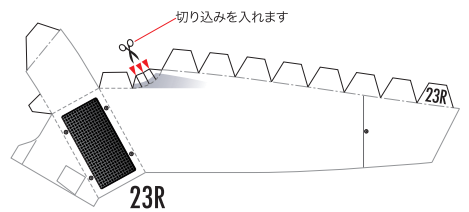
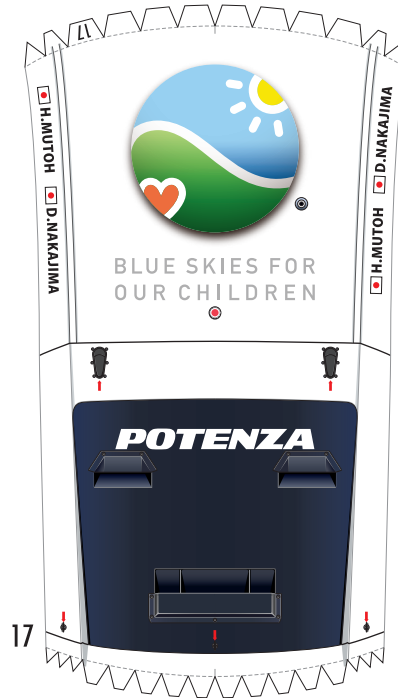
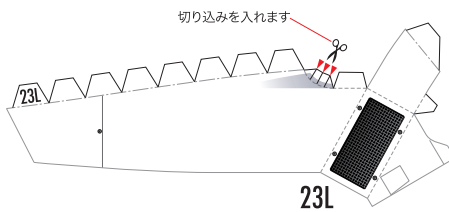
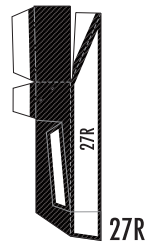
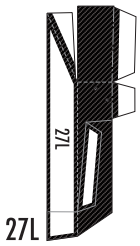
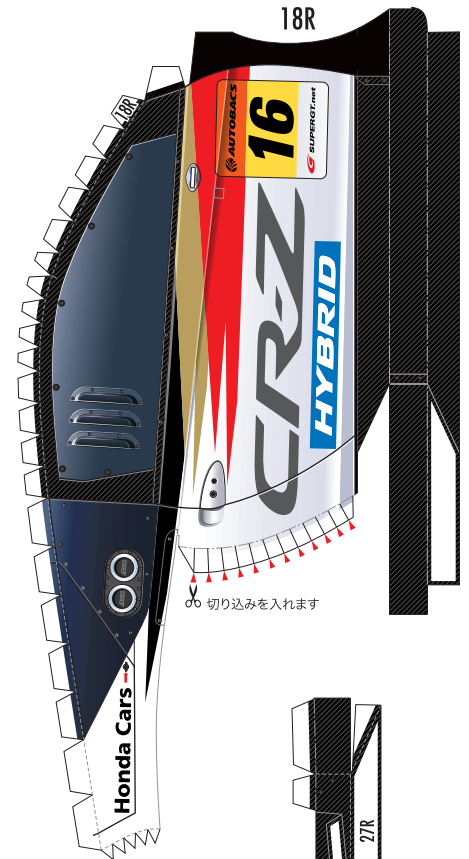
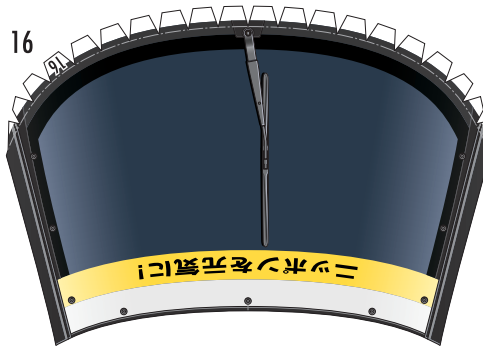
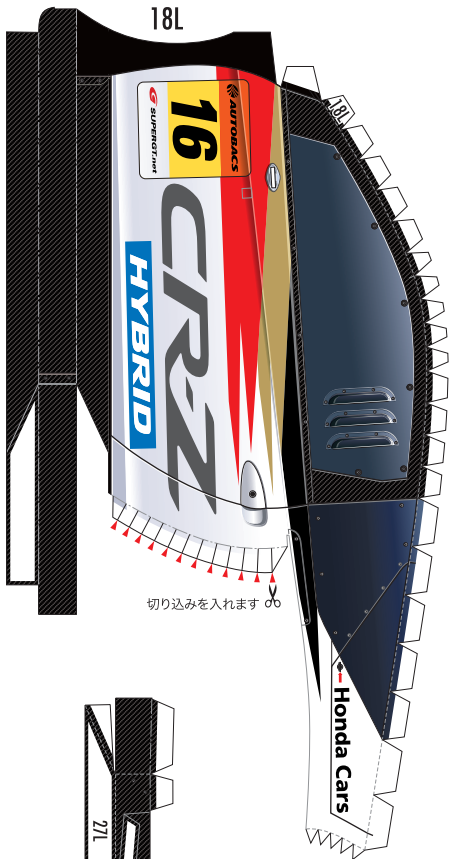


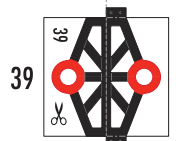
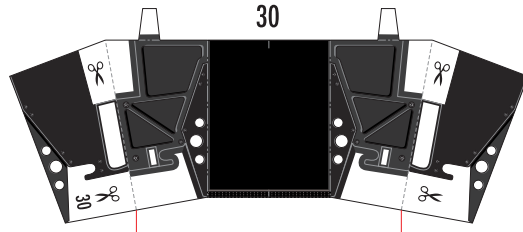
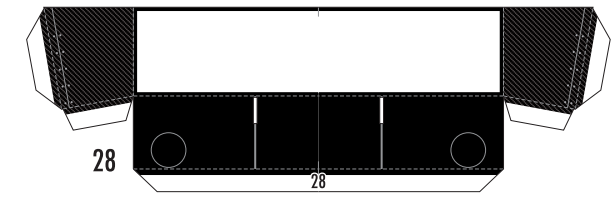
SUPER GT 2012 SERIES GT300 MUGEN CR-Z GT

1:24 Scale Paper Craft Sheet 1

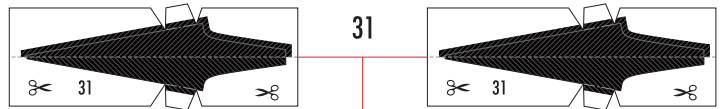
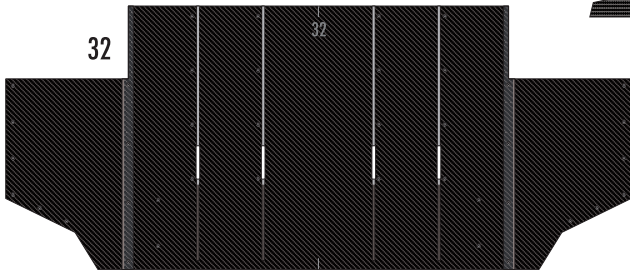
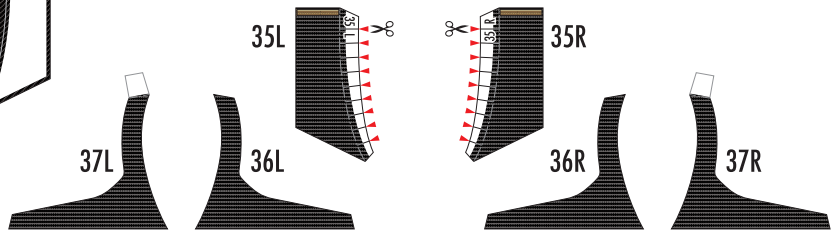
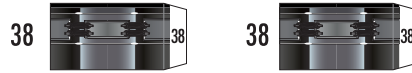
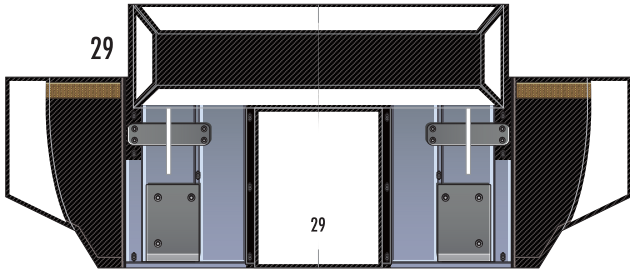




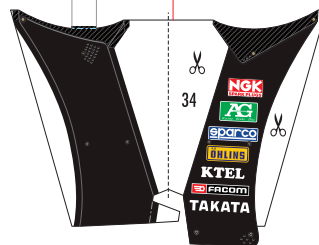
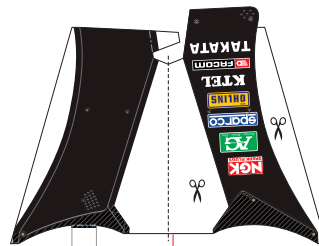
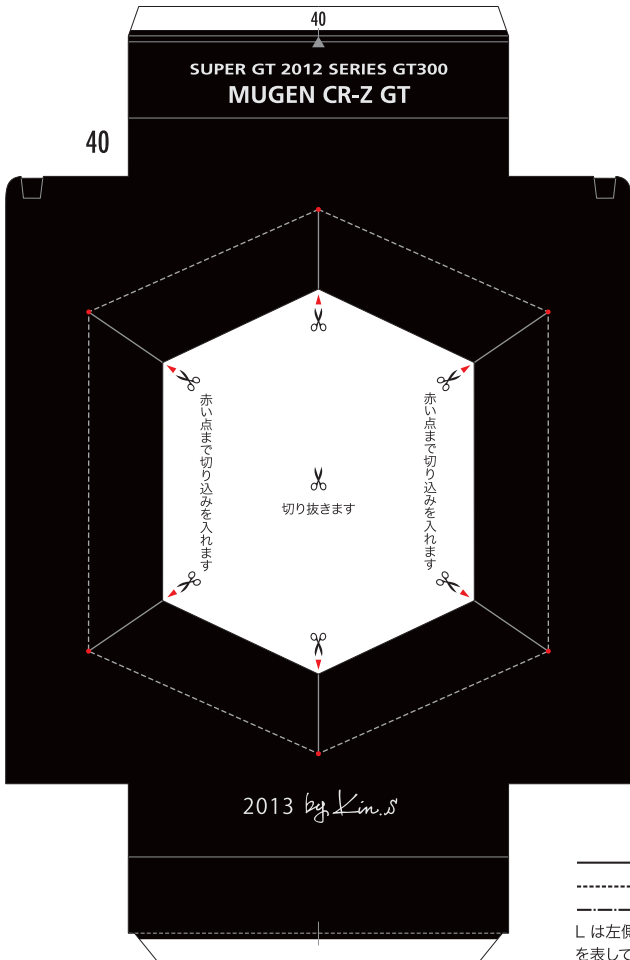
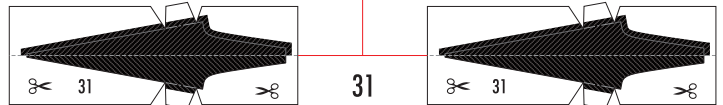
— 切る線
 山折り
 - - - 谷折り
 Lは左側、Rは右側
 を表しています



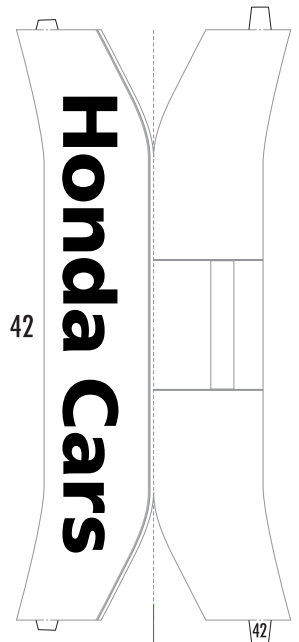
外側の線を切り取り、山折り線に沿って裏同士を貼り合わせてから、はさみマークがあるほうを切り取ります



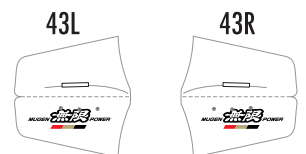
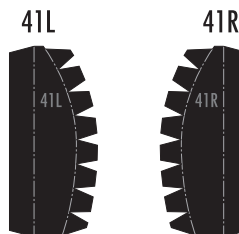
外側の線を切り取り、山折り線に沿って裏同士を貼り合わせてから、はさみマークがあるほうを切り取ります



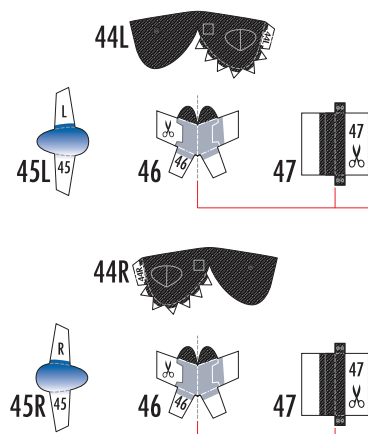
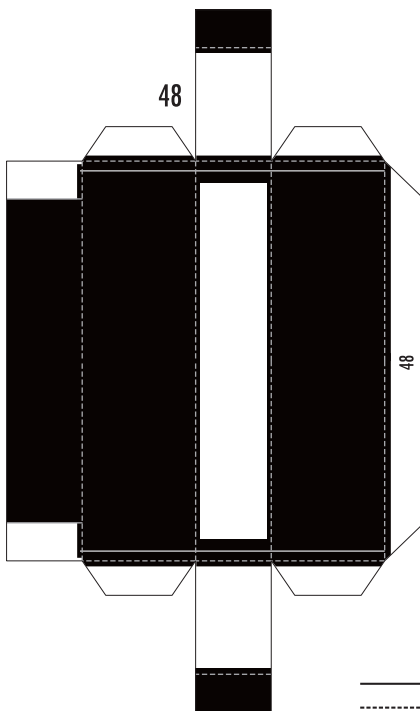
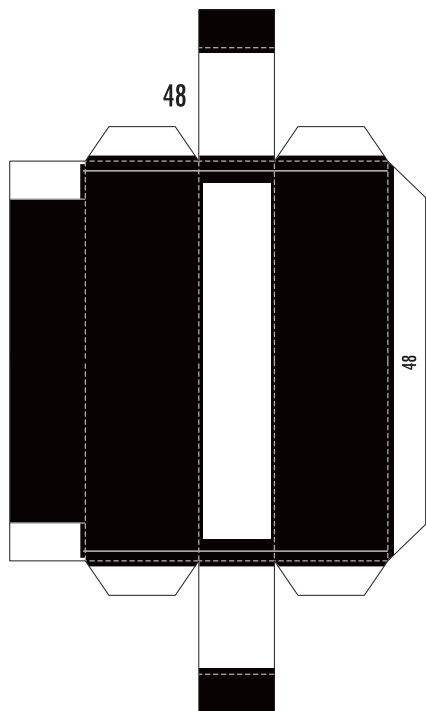
外側の線を切り取り、山折り線に沿って裏同士を貼り合わせてから、はさみマークがあるほうを切り取ります



山折り線に沿って裏同士を貼り合わせます



—— 切る線
 - - - 山折り
 - - - 谷折り
 L は左側、R は右側
 を表しています



外側の線を切り取り、山折り線に沿って裏同士を貼り合わせてください。
はさみマークがある箇所を切り取ります。

——— 切る線
- - - - 山折り
- - - - 谷折り
L は左側、R は右側
を表しています

